

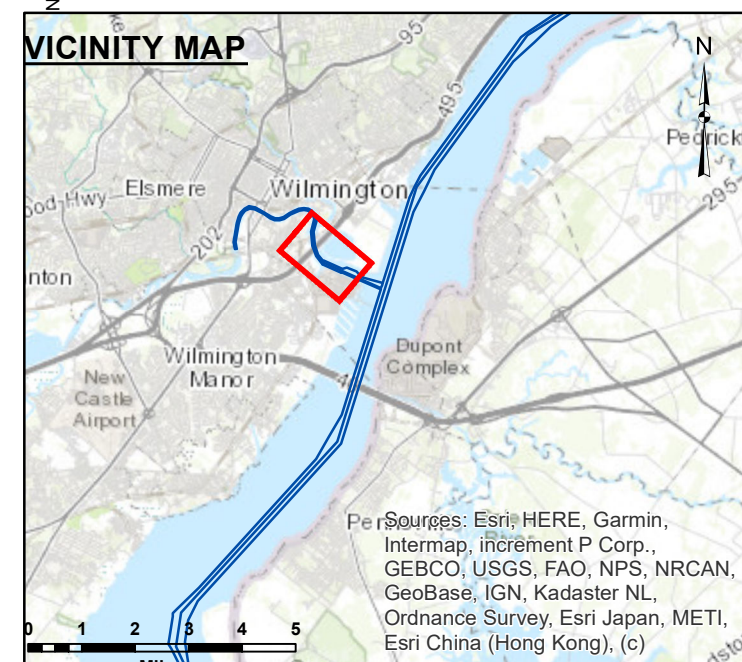
STA. 0+000 to 8+600 -- 07 FEB 22  
 STA. 8+600 to 16+829 -- 08 FEB 22

**DISCLAIMER**  
 This data is provided for general information only. It is not intended for use in navigation. The data was collected using a variety of methods and may not be as accurate as other data. The data is provided as a service to the public and is not intended to be used for navigation. The data is provided as a service to the public and is not intended to be used for navigation. The data is provided as a service to the public and is not intended to be used for navigation.

Surveyed By: \_\_\_\_\_  
 Checked By: \_\_\_\_\_  
 U.S. ARMY CORPS OF ENGINEERS  
 PHILADELPHIA DISTRICT

**CHRISTINA RIVER, DELAWARE**  
**EXAMINATION**  
 STA. 0+000 to STA. 16+844.37

**E-CR-02**

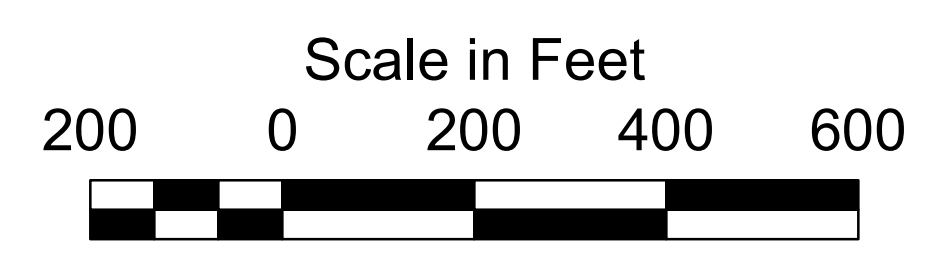


1. THIS SURVEY MEETS STANDARDS AS OUTLINED IN CORPS OF ENGINEERS' HYDROGRAPHIC SURVEY MANUAL EM1110-2-1003, DATED NOVEMBER 30, 2013 FOR NAVIGATION AND DREDGING SUPPORT SURVEYS.
2. HORIZONTAL REFERENCE - NAD 83, NEW JERSEY STATE PLANE, ZONE 2900, U.S. FOOT.
3. VERTICAL REFERENCE - MEAN LOWER LOW WATER, WHICH IS 2.98' BELOW N.A.V.D. 88.
4. GEIOD 12B AND NOAA TIDAL EPOCH: 1983 - 2001 WERE USED. SOUNDINGS ARE EXPRESSED IN FEET AND TENTHS AND REFER TO MEAN LOWER LOW WATER.

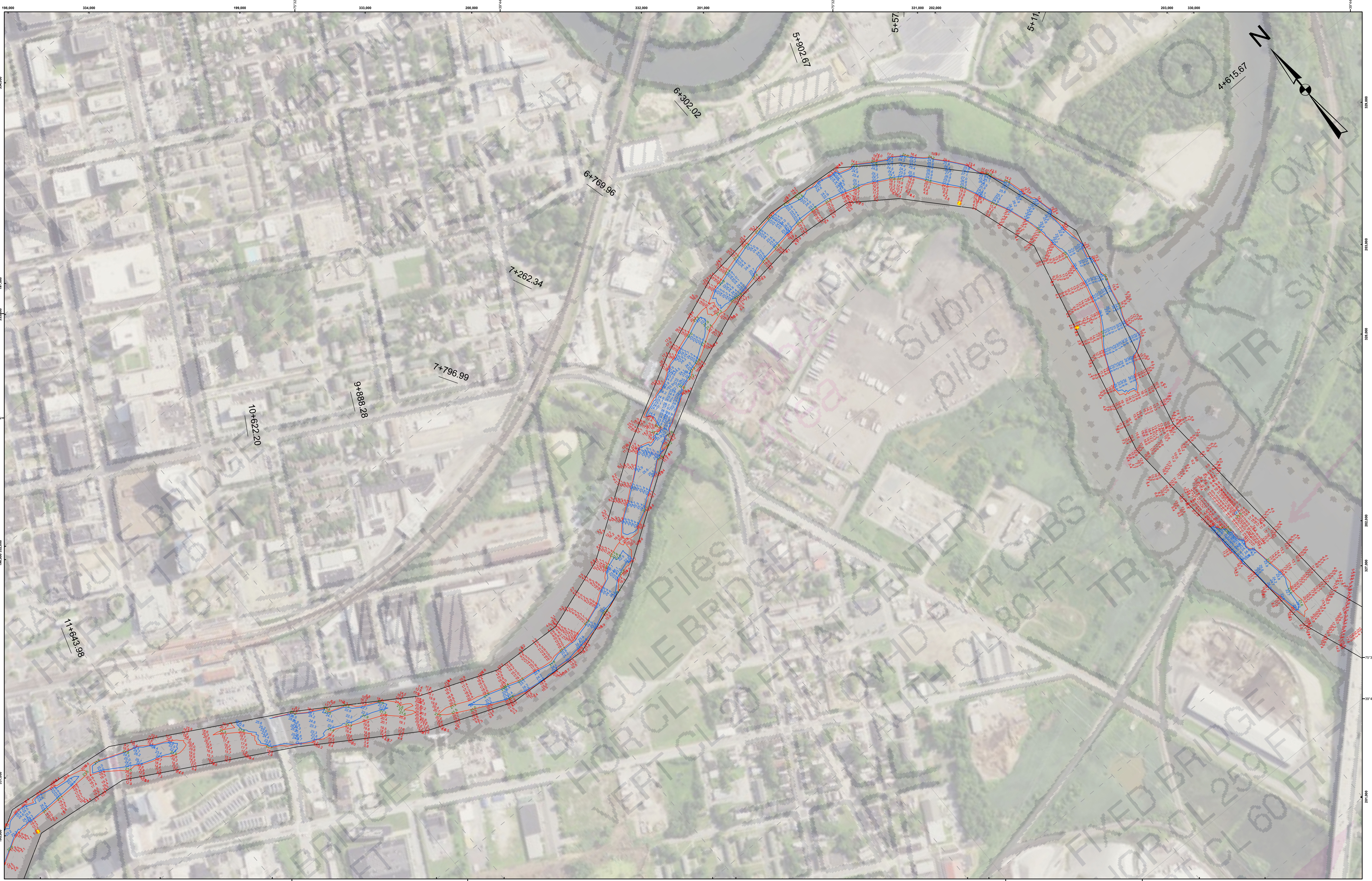
5. CONTOURS WERE GENERATED USING THE MINIMUM DEPTH WITHIN SEARCH RADIUS OF 18'.
6. HYPACK, INC. SOFTWARE WAS USED TO PERFORM THE SOUNDING SELECTION AND CONTOUR GENERATION.
7. THE INFORMATION DEPICTED ON THIS MAP REPRESENT THE RESULTS OF SURVEYS MADE ON THE DATES INDICATED AND CAN ONLY BE CONSIDERED AS INDICATING THE GENERAL CONDITIONS EXISTING AT THAT TIME.

8. THE POSITIONS OF THE AIDS TO NAVIGATION ARE PROVIDED FOR INFORMATION ONLY, AND SHOULD NOT BE USED FOR NAVIGATION.
9. THE LIMITS OF THE FEDERAL CHANNEL DEPICT THE MOST CURRENT CHANNEL FRAMEWORK AVAILABLE WHICH CAN ALSO BE DOWNLOADED HERE:  
<http://navigation.usace.army.mil/Survey/Framework>

10. BASE MAPPING LINEWORK OR ORTHOPHOTOGRAPHY HAS BEEN COMPILED FROM A VARIETY OF SOURCES AND DATES AND IS INTENDED TO PORTRAY GENERAL CHARACTERISTICS OF THE SHORELINE AND OTHER FEATURES. TEMPORAL CHANGES MAY HAVE OCCURRED SINCE THIS DATA SET WAS COLLECTED AND SOME PARTS OF THE DATA MAY NO LONGER BE AN ACCURATE REPRESENTATION OF THE SURFACE CONDITIONS.



- Shoalest Sounding
- 21' Curve of Depth
- 22' Curve of Depth
- - - CenterLine
- ToeLine
- StationLine



STA. 0+000 to 8+600 -- 07 FEB 22  
 STA. 8+600 to 16+829 -- 08 FEB 22

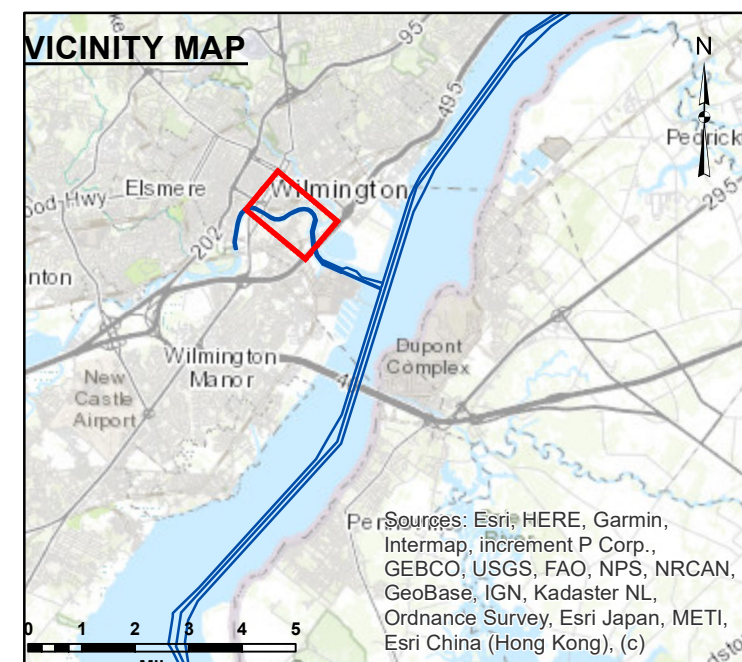
**DISCLAIMER**  
 This data is provided for general information only. It is not intended for use in any design or construction project. The government disclaims any liability for the use of this data, including any damage suffered as a result of using, modifying, or reproducing this information.

U.S. ARMY CORPS OF ENGINEERS  
 PHILADELPHIA DISTRICT

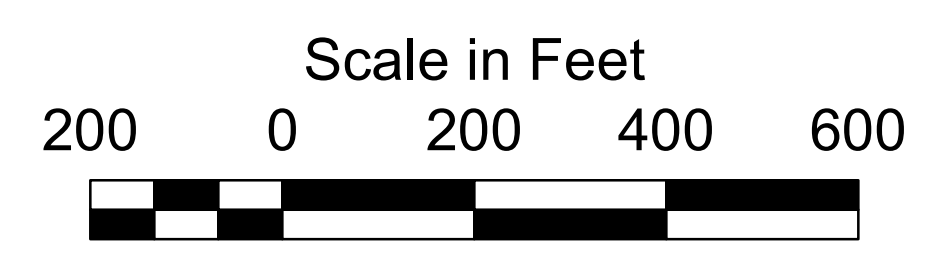
Drawn By: \_\_\_\_\_  
 Project No: \_\_\_\_\_  
 Project Name: \_\_\_\_\_  
 Approval: \_\_\_\_\_  
 Chief Survey Section

**CHRISTINA RIVER, DELAWARE**  
**EXAMINATION**  
 STA. 0+000 TO STA. 16+844.37

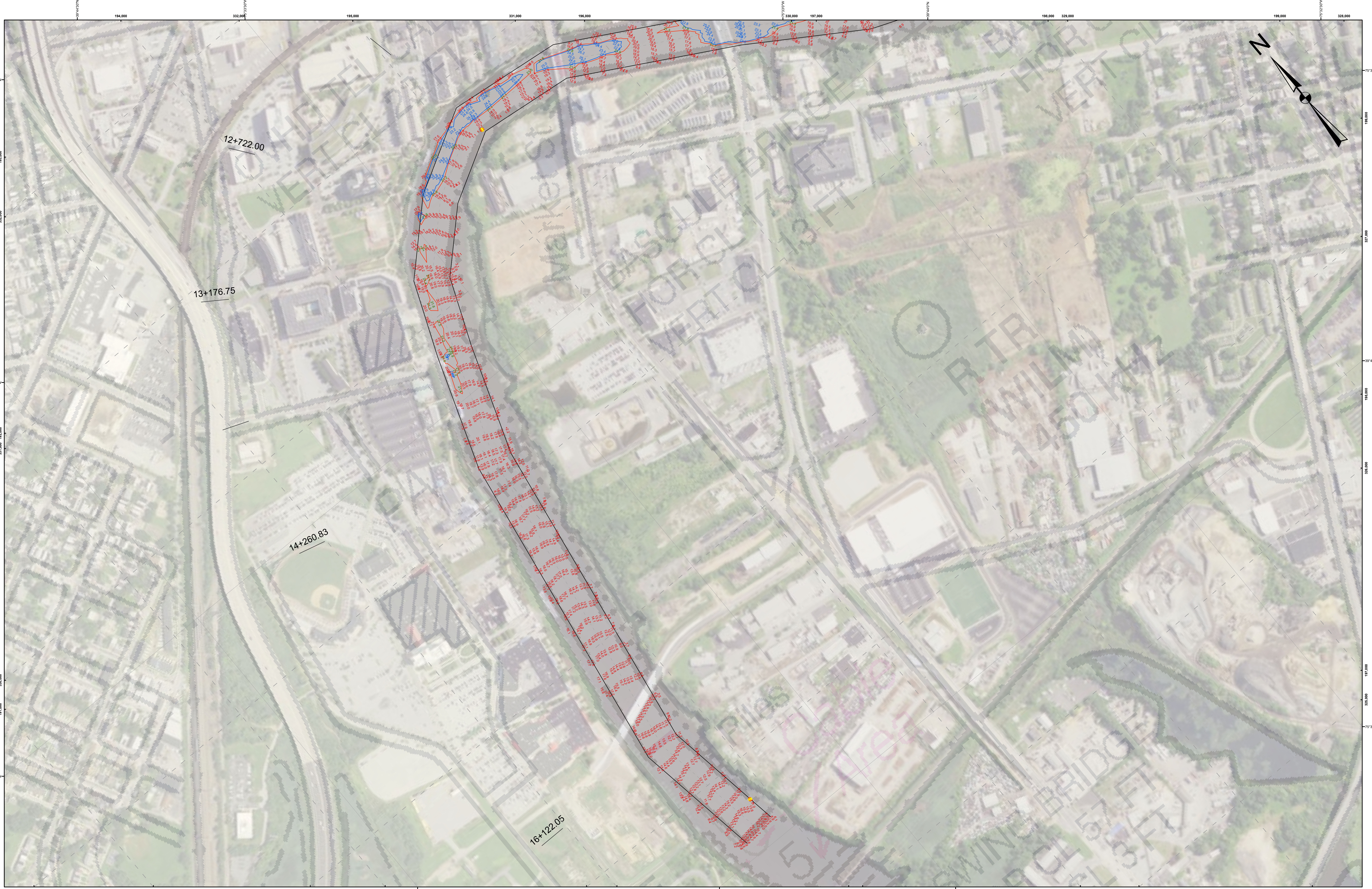
**E-CR-02**



- THIS SURVEY MEETS STANDARDS AS OUTLINED IN CORPS OF ENGINEERS' HYDROGRAPHIC SURVEY MANUAL EM1110-2-1003, DATED NOVEMBER 30, 2013 FOR NAVIGATION AND DREDGING SUPPORT SURVEYS.
- HORIZONTAL REFERENCE - NAD 83, NEW JERSEY STATE PLANE, ZONE 2900, U.S. FOOT.
- VERTICAL REFERENCE - MEAN LOWER LOW WATER, WHICH IS 2.98' BELOW N.A.V.D. 88.
- GEOID 12B AND NOAA TIDAL EPOCH: 1983 - 2001 WERE USED. SOUNDINGS ARE EXPRESSED IN FEET AND TENTHS AND REFER TO MEAN LOWER LOW WATER.
- CONTOURS WERE GENERATED USING THE MINIMUM DEPTH WITHIN SEARCH RADIUS OF 18'.
- HYPACK, INC. SOFTWARE WAS USED TO PERFORM THE SOUNDING SELECTION AND CONTOUR GENERATION.
- THE INFORMATION DEPICTED ON THIS MAP REPRESENT THE RESULTS OF SURVEYS MADE ON THE DATES INDICATED AND CAN ONLY BE CONSIDERED AS INDICATING THE GENERAL CONDITIONS EXISTING AT THAT TIME.
- THE POSITIONS OF THE AIDS TO NAVIGATION ARE PROVIDED FOR INFORMATION ONLY, AND SHOULD NOT BE USED FOR NAVIGATION.
- THE LIMITS OF THE FEDERAL CHANNEL DEPICT THE MOST CURRENT CHANNEL FRAMEWORK AVAILABLE WHICH CAN ALSO BE DOWNLOADED HERE:  
<http://navigation.usace.army.mil/Survey/Framework>
- BASE MAPPING LINEWORK OR ORTHOPHOTOGRAPHY HAS BEEN COMPILED FROM A VARIETY OF SOURCES AND DATES AND IS INTENDED TO PORTRAY GENERAL CHARACTERISTICS OF THE SHORELINE AND OTHER FEATURES. TEMPORAL CHANGES MAY HAVE OCCURRED SINCE THIS DATA SET WAS COLLECTED AND SOME PARTS OF THE DATA MAY NO LONGER BE AN ACCURATE REPRESENTATION OF THE SURFACE CONDITIONS.



- Shoalest Sounding
- 21' Curve of Depth
- 22' Curve of Depth
- - - CenterLine
- ToeLine
- StationLine



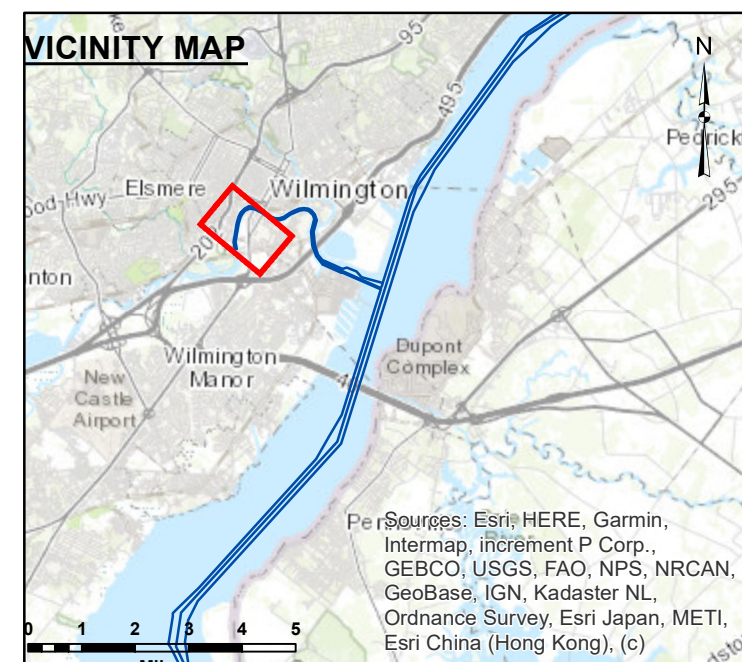
STA. 0+000 to 8+600 -- 07 FEB 22  
 STA. 8+600 to 16+829 -- 08 FEB 22

**DISCLAIMER**  
 This map is provided for general information only. It is not intended for navigation. The data was collected using a variety of methods and may not be as accurate as modern surveying techniques. The government disclaims any liability for the use of this information in any way, including navigation, and any damage suffered as a result of using, modifying, or reproducing this information.

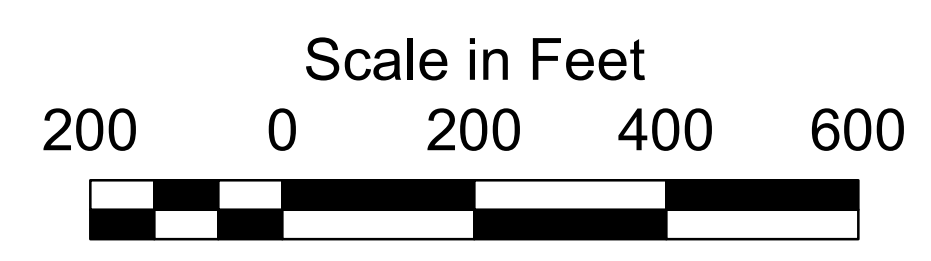
U.S. ARMY CORPS OF ENGINEERS  
 PHILADELPHIA DISTRICT  
 Drawn By: \_\_\_\_\_  
 Project No: \_\_\_\_\_  
 Approval: \_\_\_\_\_  
 Chief Survey Section

CHRISTINA RIVER, DELAWARE  
 EXAMINATION  
 STA. 0+000 to STA. 16+844.37

E-CR-02



- THIS SURVEY MEETS STANDARDS AS OUTLINED IN CORPS OF ENGINEERS' HYDROGRAPHIC SURVEY MANUAL EM1110-2-1003, DATED NOVEMBER 30, 2013 FOR NAVIGATION AND DREDGING SUPPORT SURVEYS.
- HORIZONTAL REFERENCE - NAD 83, NEW JERSEY STATE PLANE, ZONE 2900, U.S. FOOT.
- VERTICAL REFERENCE - MEAN LOWER LOW WATER, WHICH IS 2.98' BELOW N.A.V.D. 88.
- GEOID 12B AND NOAA TIDAL EPOCH: 1983 - 2001 WERE USED. SOUNDINGS ARE EXPRESSED IN FEET AND TENTHS AND REFER TO MEAN LOWER LOW WATER.
- CONTOURS WERE GENERATED USING THE MINIMUM DEPTH WITHIN SEARCH RADIUS OF 18'.
- HYPACK, INC. SOFTWARE WAS USED TO PERFORM THE SOUNDING SELECTION AND CONTOUR GENERATION.
- THE INFORMATION DEPICTED ON THIS MAP REPRESENT THE RESULTS OF SURVEYS MADE ON THE DATES INDICATED AND CAN ONLY BE CONSIDERED AS INDICATING THE GENERAL CONDITIONS EXISTING AT THAT TIME.
- THE POSITIONS OF THE AIDS TO NAVIGATION ARE PROVIDED FOR INFORMATION ONLY, AND SHOULD NOT BE USED FOR NAVIGATION.
- THE LIMITS OF THE FEDERAL CHANNEL DEPICT THE MOST CURRENT CHANNEL FRAMEWORK AVAILABLE WHICH CAN ALSO BE DOWNLOADED HERE:  
<http://navigation.usace.army.mil/Survey/Framework>
- BASE MAPPING LINEWORK OR ORTHOPHOTOGRAPHY HAS BEEN COMPILED FROM A VARIETY OF SOURCES AND DATES AND IS INTENDED TO PORTRAY GENERAL CHARACTERISTICS OF THE SHORELINE AND OTHER FEATURES. TEMPORAL CHANGES MAY HAVE OCCURRED SINCE THIS DATA SET WAS COLLECTED AND SOME PARTS OF THE DATA MAY NO LONGER BE AN ACCURATE REPRESENTATION OF THE SURFACE CONDITIONS.



- Shoalest Sounding
- 21' Curve of Depth
- 22' Curve of Depth
- - - CenterLine
- ToeLine
- StationLine