



Marine Safety Information Bulletin

Commander
U.S. Coast Guard
Sector Delaware Bay
1 Washington Ave
Philadelphia, PA 19147

MSIB Number: 01-23 (Update 1)
Contact: Waterways Management Staff
Phone: (215) 271-4889
E-Mail: DelawareBayWWM@uscgml
Date: January 31, 2023

PHILADELPHIA TO SEA MAINTENANCE DREDGING

The Captain of the Port (COTP), Delaware Bay, is notifying mariners that the Coast Guard is establishing two safety zones to facilitate the Philadelphia to Sea Maintenance Dredging. Maintenance dredging will be conducted in Marcus Hook Range and Marcus Hook Anchorage (No. 7) on the Delaware River from January 10, 2023, through approximately March 15, 2023.

Safety zone one includes all the waters within a 250-yard radius of the dredge ESSEX and all associated dredge equipment operating in or around Marcus Hook Range.

Safety zone two includes all the waters of Marcus Hook Anchorage (No. 7) found in 33 CFR 110.157 (a) (8).

Vessels wishing to transit through safety zones one and/or two may do so if they can make satisfactory passing arrangements with the dredge ESSEX, in accordance with the Inland Navigational Rules in 33 Code of Federal Regulations Subchapter E via VHF-FM channel 13, at least one hour prior to arrival.

Vessels desiring to anchor within Marcus Hook Anchorage must obtain permission from the COTP at least 24 hours in advance, at 215-271-4807. The COTP will permit one vessel at a time on a "first come, first served" basis in the **lower portion** of the anchorage, with preference given to those vessels greater than 650' in overall length. The maritime public will be notified of any changes to vessel traffic patterns or availability of Marcus Hook Anchorage via subsequent updates to this MSIB and Broadcast Notice to Mariners.

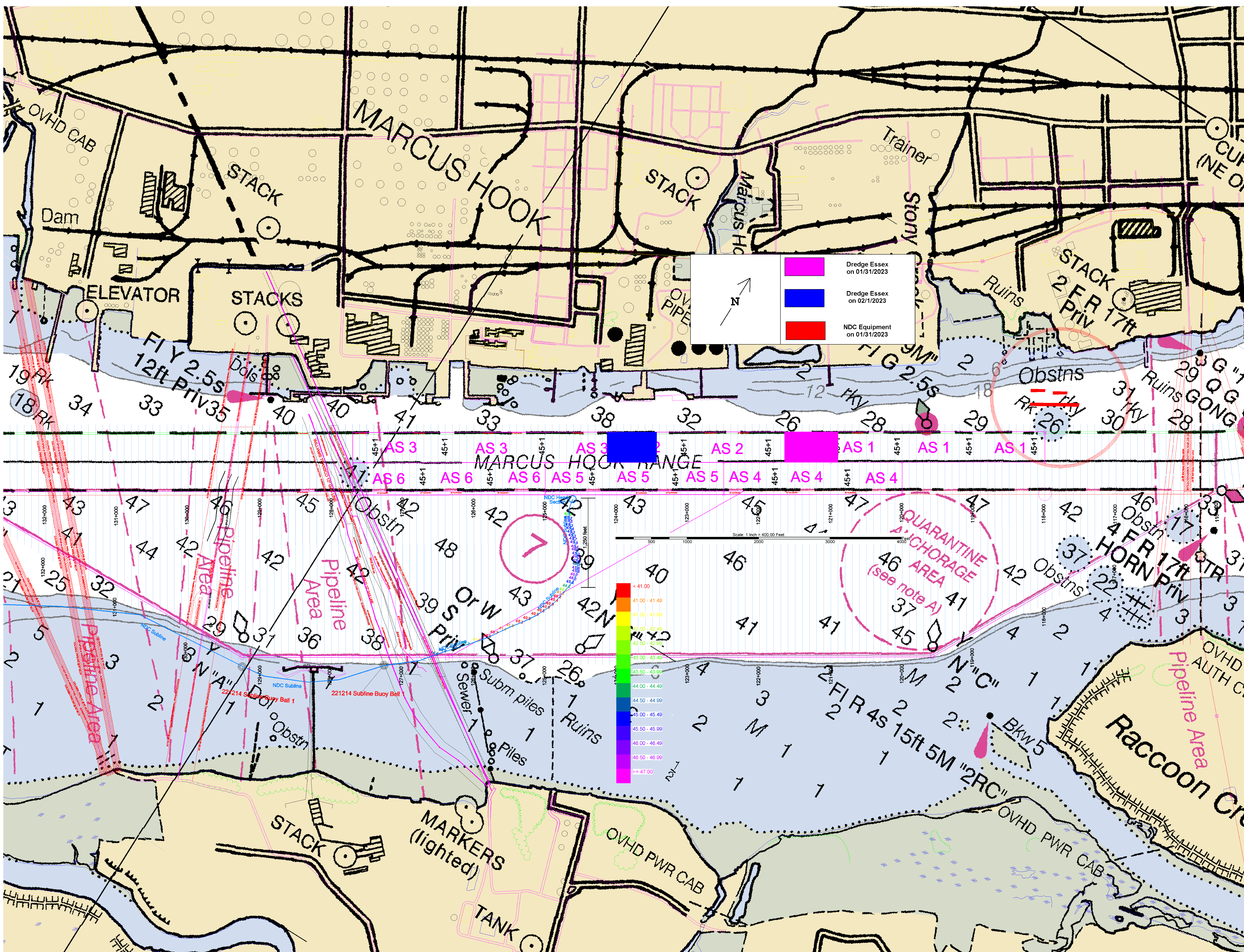
Normally, Marcus Hook Anchorage is a 48-hour anchorage; however, vessels will not be permitted to occupy the anchorage beyond 12 hours during this time.

Vessels that require an examination by the Public Health Service, Customs or Immigration authorities will be directed to an anchorage for the required inspection by the COTP on a case-by-case basis. Vessels are encouraged to use Mantua Creek Anchorage (No. 9), Naval Base, Philadelphia Anchorage (No. 10), and Deepwater Point Anchorage (No. 6) as alternatives.

See the attached charlet for the temporary location of the submerged pipeline.

If there are any questions regarding the contents of this bulletin or expectations of the Captain of the Port, please contact (215) 271-4807.

J. D. THEEL
Captain, U.S. Coast Guard
Captain of the Port, Delaware Bay



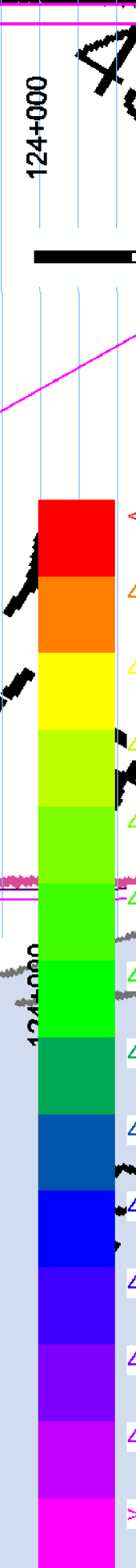
MARCUS HOOK

Legend:

- Dredge Essex on 01/31/2023
- Dredge Essex on 02/1/2023
- NDC Equipment on 01/31/2023

North arrow pointing up.

NDC Equipment on 01/31/2023



QUARANTINE ANCHORAGE AREA
(see note A)

Raccoon Creek

MARKERS (lighted)

OVHD PWR CAB

OVHD PWR CAB

TANK

OVHD CAB

Dam

STACK

STACK

STACK 2 F R 17ft

Trainer

ELEVATOR

STACKS

FLY 2.5s
12ft Priv 35

FLY 2.5s
12ft Priv 28

Obstns
RK 26

Obstns
RK 26

MARCUS HOOK RANGE

QUARANTINE ANCHORAGE AREA
(see note A)

Obstns
4 F R 17ft TR
HORN PRIV

39 S Or W
12 Priv

2 F R 4S 15ft 5M "2RC"

Raccoon Creek

STACK

OVHD PWR CAB

OVHD PWR CAB

TANK

OVHD CAB

Dam

STACK

STACK

STACK 2 F R 17ft

Trainer

ELEVATOR

STACKS

FLY 2.5s
12ft Priv 35

FLY 2.5s
12ft Priv 28

Obstns
RK 26

Obstns
RK 26

MARCUS HOOK RANGE

QUARANTINE ANCHORAGE AREA
(see note A)

Obstns
4 F R 17ft TR
HORN PRIV

39 S Or W
12 Priv

2 F R 4S 15ft 5M "2RC"

Raccoon Creek

STACK

OVHD PWR CAB

OVHD PWR CAB

TANK