



# Marine Safety Information Bulletin

Commander  
U.S. Coast Guard  
Sector Delaware Bay  
1 Washington Ave  
Philadelphia, PA 19147

MSIB Number: 14-21  
Date: November 2, 2021  
Contact: Waterways Management Staff  
Phone: (215) 271-4889  
E-Mail: DelawareBayWWM@uscg.mil

## SPEED RESTRICTION IMPOSED TO PROTECT NORTH ATLANTIC RIGHT WHALES

The Captain of the Port, Delaware Bay advises all vessels transiting the Mid-Atlantic Ocean that the National Oceanic and Atmospheric Administration (NOAA) has established regulations which implement a 10-knot speed restriction for all vessels 65 ft (19.8 m) or greater in specified locations (called Seasonal Management Areas or SMAs) during certain times of the year along the east coast of the U.S. Atlantic seaboard. These regulations are designed to protect endangered North Atlantic right whales by reducing the likelihood of collisions between ships and whales.

The 10-knot speed restriction extends out 20 nautical miles around major mid-Atlantic ports. According to NOAA researchers, about 83 percent of right whale sightings in the mid-Atlantic region occur within 20 nautical miles of shore. The speed restriction also applies in waters off New England and the southeastern U.S., where whales gather seasonally.

The speed restrictions apply in the following approximate locations at the following times; they are based on times whales are known to be in these areas:

- Southeastern U.S. from St. Augustine, FL to Brunswick, GA from November 15 to April 15
- **Mid-Atlantic U.S. areas from Brunswick, GA to Rhode Island from November 1 to April 30**
- Cape Cod Bay from January 1 to May 15
- Off Race Point at northern end of Cape Cod from March 1 to April 30
- Great South Channel of New England from April 1 to July 31

Specifically for vessels entering the Delaware Bay, the restriction applies in the following location: Within a 20-nm (37 km) radius (as measured seaward from COLREGS lines) of the center point of the entrance to the Delaware Bay (Ports of Philadelphia and Wilmington): 38°52'27.4" N-075°01'32.1" W.

For more information about how to comply with the Northern Right Whale Ship Strike Reduction Rule (50 CFR 224.105), please see the attached pamphlet or visit the NOAA website at:

<https://www.fisheries.noaa.gov/national/endangered-species-conservation/reducing-ship-strikes-north-atlantic-right-whales>. You may also call the Sector Delaware Bay Waterways Management Branch at (215) 271-4889.

J. D. Theel  
Captain, U.S. Coast Guard  
Captain of the Port, Delaware Bay



# NOAA FISHERIES SERVICE

## Compliance Guide for Right Whale Ship Strike Reduction Rule (50 CFR 224.105)

**ATTENTION: All vessels greater than or equal to 65 ft (19.8 m) in overall length and subject to the jurisdiction of the United States and all vessels greater than or equal to 65 ft in overall length entering or departing a port or place subject to the jurisdiction of the United States.**

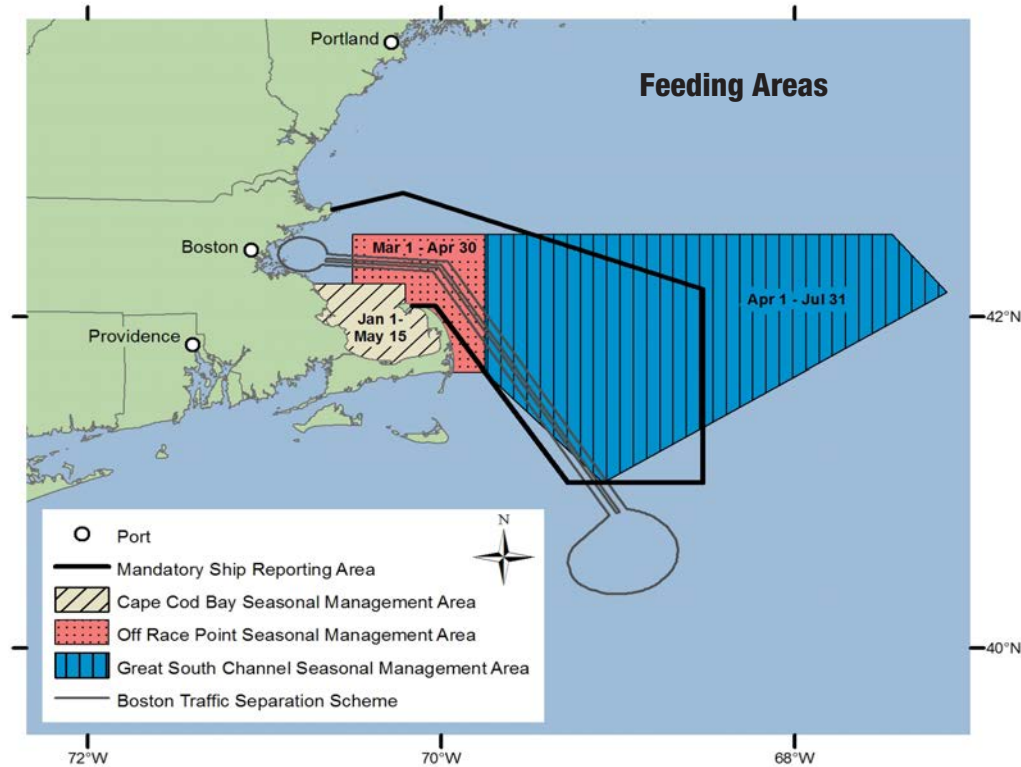
**YOU MUST SLOW TO SPEEDS OF 10 KNOTS OR LESS IN SEASONAL MANAGEMENT AREAS**

Mandatory speed restrictions of 10 knots or less are required in Seasonal Management Areas along the U.S. East Coast during times when right whales are likely to be present. The purpose of this regulation is to reduce the likelihood of deaths and serious injuries to these endangered whales that result from collisions with ships.



NOAA

### Northeast U.S. Seasonal Management Areas



### Feeding Areas

#### Cape Cod Bay

January 1 - May 15

Includes all waters of Cape Cod Bay with Northern Boundary of 42°04'56.5"N, 070°12'W to 42°12'N, 070°12'W then due west back to shore.

#### Off Race Point

March 1 - April 30

Waters Bounded by:  
42°04'56.5"N 070°12'W  
42°12'N, 070°12'W  
42°12'N, 070°30'W  
42°30'N, 070°30'W  
42°30'N, 069°45'W  
41°40'N, 069°45'W  
then due west back to shore.

#### Great South Channel

April 1 - July 31

Waters Bounded by:  
42°30'N, 069°45'W  
42°30'N, 067°27'W  
42°09'N, 067°08'24"W  
41°00'N, 069°05'W  
41°40'N, 069°45'W  
then back to starting pt.

The rule does not apply to waters inshore of COLREGS lines.

Vessels may operate at a speed greater than 10 knots only if necessary to maintain a safe maneuvering speed in an area where conditions severely restrict vessel maneuverability as determined by the pilot or master.

If a deviation from the 10 knot speed restriction is necessary, the following information must be entered into the logbook:

- Reasons for deviation
- Speed at which vessel is operated
- Latitude and longitude at time of deviation
- Time and duration of deviation
- Master of the vessel shall sign and date the logbook entry

## Mid-Atlantic U.S. Seasonal Management Areas

### Migratory Route

**November 1 through April 30**

Vessel speed is restricted in the following areas:

•Block Island Sound waters bounded by:

- 40°51'53.7" N 070°36'44.9" W
- 41°20'14.1" N 070°49'44.1" W
- 41°04'16.7" N 071°51'21.0" W
- 40°35'56.5" N 071°38'25.1" W
- then back to starting point.

•Within a 20-nm (37 km) radius of the following (as measured seaward from the COLREGS lines):

-Ports of New York/New Jersey:

40°29'42.2"N 073°55'57.6"W

-Entrance to the Delaware Bay

(Ports of Philadelphia and Wilmington):

38°52'27.4"N 075°01'32.1"W

-Entrance to the Chesapeake Bay

(Ports of Hampton Roads and Baltimore):

37°00'36.9"N 075°57'50.5"W

-Ports of Morehead City and Beaufort, NC:

34°41'32.0"N 076°40'08.3"W

•Within a continuous area 20 nm from shore between Wilmington, NC, to Brunswick, GA, bounded by the following:

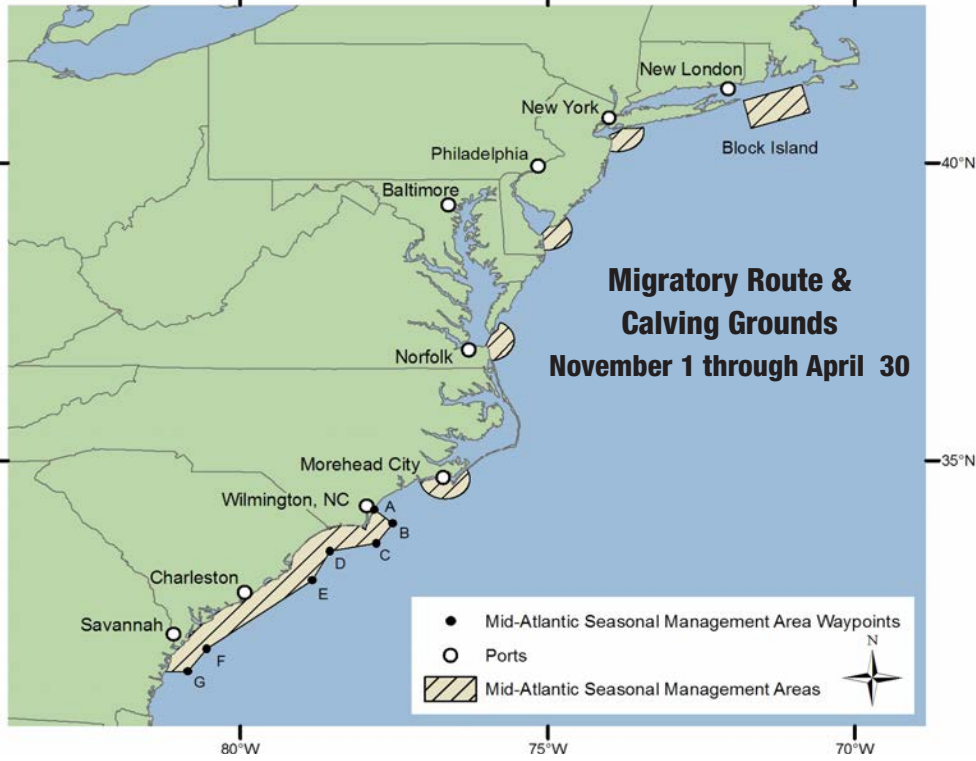
Point	Latitude	Longitude
A	34°10'30"N	077°49'12"W
B	33°56'42"N	077°31'30"W
C	33°36'30"N	077°47'06"W
D	33°28'24"N	078°32'30"W
E	32°59'06"N	078°50'18"W
F	31°50'00"N	080°33'12"W
G	31°27'00"N	080°51'36"W

### Calving and Nursery Grounds

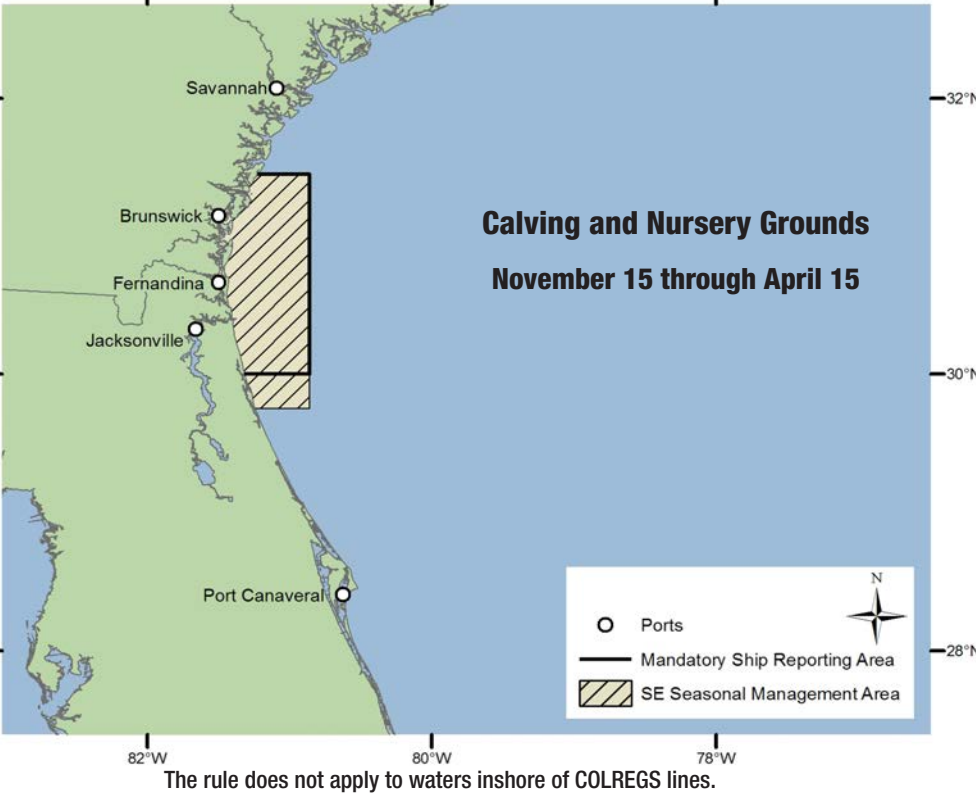
**November 15 through April 15**

Vessel speed is restricted in the area bounded to the north by latitude 31°27'N; to the south by latitude 29°45'N; to the east by longitude 080°51'36"W.

For more information, visit:  
<http://www.nmfs.noaa.gov/pr/shipstrike>  
<http://nero.noaa.gov/shipstrike>  
<http://rightwhaleessouth.nmfs.noaa.gov>



## Southeast U.S. Seasonal Management Area



The rule does not apply to waters inshore of COLREGS lines.

**Voluntary Dynamic Management Areas (DMAs)** may also be established by NOAA Fisheries Service. Mariners are encouraged to avoid these areas or reduce speeds to 10 knots or less while transiting through these areas. NOAA Fisheries Service will announce DMAs to mariners through its customary maritime communication media.

This serves as NOAA's small entity compliance guide.

OMB Control #0648-0580