

# Marine Safety Information Bulletin

Commander  
U.S. Coast Guard  
Sector Delaware Bay  
1 Washington Ave  
Philadelphia, PA 19147

MSIB Number: 34-18  
Date: October 5, 2018  
Contact: Waterways Management Staff  
Phone: (215) 271-4814  
E-Mail: [SecDelBayWWM@uscg.mil](mailto:SecDelBayWWM@uscg.mil)

## OBJECTS IN MANTUA CREEK ANCHORAGE

The Captain of the Port, Delaware Bay, is notifying mariners of two objects reported just outside the main navigational channel of Mifflin Range, within the boundaries of Mantua Creek Anchorage #9 on the Delaware River. **\*\*Please see page 2 for chartlet\*\***

- Object 1 is located at approximately 39° 51.991096' North Latitude, -75° 13.018279' West Longitude.
  - Suspected lost anchor with dimensions 6.5 feet in width and 9 feet in height.
  - Located approximately 460 feet from the channel centerline towards New Jersey shoreline in Mantua Creek Anchorage.
  - **While the depth of water at mean low low water over this obstruction is 42.6' and remains below the channel control depth, charted depth in the area is 43 to 45 feet.**
- Object 2 is located at approximately 39° 51.930822' North Latitude, -74° 13.094867' West Longitude.
  - Unknown object.
  - Located approximately 540 feet from channel centerline towards New Jersey shoreline in Mantua Creek Anchorage.
  - **Reduced depth at mean low low water is 29.9 feet.**

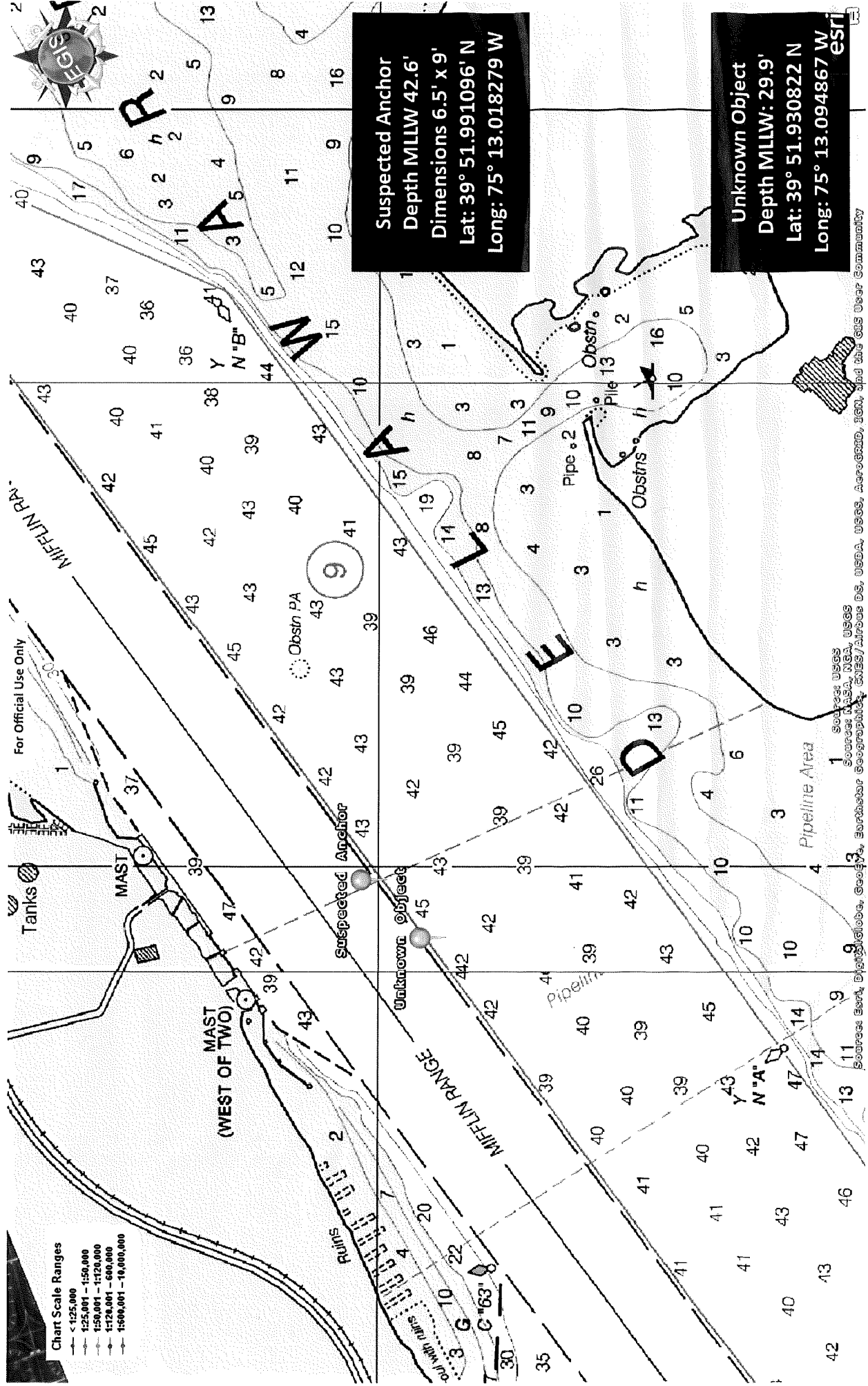
Mariners are advised to use extreme caution when transiting this portion of Mantua Creek Anchorage as some depths at mean low low water could be hazardous to navigation.

**Vessels drafting over 30 feet should avoid this area and transit around the objects.**

Survey and salvage vessels will begin operating in the vicinity of the objects within the next week. As survey and salvage operations progress any waterway restrictions will be broadcast through a broadcast notice to mariners and/or subsequent marine safety information bulletins. Vessels are requested to contact working vessels in this location on VHF Channel 16 and make safe passing arrangements no later than 1 hour prior to arrival at this location.

If you have any questions regarding the content of this bulletin, please contact the Waterways Management staff at (215) 271-4814/4889 or the Command Center at (215) 271-4807.

S. E. Anderson  
Captain, U.S. Coast Guard  
Captain of the Port, Delaware Bay



**Chart Scale Ranges**

- < 125,000
- 125,001 - 150,000
- 150,001 - 1120,000
- 1120,001 - 600,000
- 1500,001 - 10,000,000

1 Source: USGS  
 2 Source: NOAA, NGA, USGS  
 3 Source: NOAA, NGA, USGS  
 4 Source: NOAA, NGA, USGS  
 5 Source: NOAA, NGA, USGS  
 6 Source: NOAA, NGA, USGS  
 7 Source: NOAA, NGA, USGS  
 8 Source: NOAA, NGA, USGS  
 9 Source: NOAA, NGA, USGS  
 10 Source: NOAA, NGA, USGS  
 11 Source: NOAA, NGA, USGS  
 12 Source: NOAA, NGA, USGS  
 13 Source: NOAA, NGA, USGS  
 14 Source: NOAA, NGA, USGS  
 15 Source: NOAA, NGA, USGS  
 16 Source: NOAA, NGA, USGS  
 17 Source: NOAA, NGA, USGS  
 18 Source: NOAA, NGA, USGS  
 19 Source: NOAA, NGA, USGS  
 20 Source: NOAA, NGA, USGS  
 21 Source: NOAA, NGA, USGS  
 22 Source: NOAA, NGA, USGS  
 23 Source: NOAA, NGA, USGS  
 24 Source: NOAA, NGA, USGS  
 25 Source: NOAA, NGA, USGS  
 26 Source: NOAA, NGA, USGS  
 27 Source: NOAA, NGA, USGS  
 28 Source: NOAA, NGA, USGS  
 29 Source: NOAA, NGA, USGS  
 30 Source: NOAA, NGA, USGS  
 31 Source: NOAA, NGA, USGS  
 32 Source: NOAA, NGA, USGS  
 33 Source: NOAA, NGA, USGS  
 34 Source: NOAA, NGA, USGS  
 35 Source: NOAA, NGA, USGS  
 36 Source: NOAA, NGA, USGS  
 37 Source: NOAA, NGA, USGS  
 38 Source: NOAA, NGA, USGS  
 39 Source: NOAA, NGA, USGS  
 40 Source: NOAA, NGA, USGS  
 41 Source: NOAA, NGA, USGS  
 42 Source: NOAA, NGA, USGS  
 43 Source: NOAA, NGA, USGS  
 44 Source: NOAA, NGA, USGS  
 45 Source: NOAA, NGA, USGS  
 46 Source: NOAA, NGA, USGS  
 47 Source: NOAA, NGA, USGS  
 48 Source: NOAA, NGA, USGS  
 49 Source: NOAA, NGA, USGS  
 50 Source: NOAA, NGA, USGS  
 51 Source: NOAA, NGA, USGS  
 52 Source: NOAA, NGA, USGS  
 53 Source: NOAA, NGA, USGS  
 54 Source: NOAA, NGA, USGS  
 55 Source: NOAA, NGA, USGS  
 56 Source: NOAA, NGA, USGS  
 57 Source: NOAA, NGA, USGS  
 58 Source: NOAA, NGA, USGS  
 59 Source: NOAA, NGA, USGS  
 60 Source: NOAA, NGA, USGS  
 61 Source: NOAA, NGA, USGS  
 62 Source: NOAA, NGA, USGS  
 63 Source: NOAA, NGA, USGS  
 64 Source: NOAA, NGA, USGS  
 65 Source: NOAA, NGA, USGS  
 66 Source: NOAA, NGA, USGS  
 67 Source: NOAA, NGA, USGS  
 68 Source: NOAA, NGA, USGS  
 69 Source: NOAA, NGA, USGS  
 70 Source: NOAA, NGA, USGS  
 71 Source: NOAA, NGA, USGS  
 72 Source: NOAA, NGA, USGS  
 73 Source: NOAA, NGA, USGS  
 74 Source: NOAA, NGA, USGS  
 75 Source: NOAA, NGA, USGS  
 76 Source: NOAA, NGA, USGS  
 77 Source: NOAA, NGA, USGS  
 78 Source: NOAA, NGA, USGS  
 79 Source: NOAA, NGA, USGS  
 80 Source: NOAA, NGA, USGS  
 81 Source: NOAA, NGA, USGS  
 82 Source: NOAA, NGA, USGS  
 83 Source: NOAA, NGA, USGS  
 84 Source: NOAA, NGA, USGS  
 85 Source: NOAA, NGA, USGS  
 86 Source: NOAA, NGA, USGS  
 87 Source: NOAA, NGA, USGS  
 88 Source: NOAA, NGA, USGS  
 89 Source: NOAA, NGA, USGS  
 90 Source: NOAA, NGA, USGS  
 91 Source: NOAA, NGA, USGS  
 92 Source: NOAA, NGA, USGS  
 93 Source: NOAA, NGA, USGS  
 94 Source: NOAA, NGA, USGS  
 95 Source: NOAA, NGA, USGS  
 96 Source: NOAA, NGA, USGS  
 97 Source: NOAA, NGA, USGS  
 98 Source: NOAA, NGA, USGS  
 99 Source: NOAA, NGA, USGS  
 100 Source: NOAA, NGA, USGS

This release has been issued for public information and notification purposes only.