

# Marine Safety Information Bulletin

Commander  
U.S. Coast Guard  
Sector Delaware Bay  
1 Washington Ave  
Philadelphia, PA 19147

MSIB Number: 40-17  
Date: December 22, 2017  
Contact: Waterways Management Staff  
Phone: (215) 271-4889  
E-Mail: [secdelbaywwm@uscg.mil](mailto:secdelbaywwm@uscg.mil)

## Pipeline Removal Marcus Hook Anchorage and Range (Update 3)

The Captain of the Port, Delaware Bay, is notifying mariners of a safety zone established in the southern portion of the Marcus Hook Anchorage and Range on the Delaware River to facilitate dive operations and pipeline removal.

- The safety zone began November 21, 2017 and will continue through February 28, 2017, unless cancelled earlier by the COTP. Work will be conducted between the hours of 5:00 A.M. until 6:00 P.M. daily.
- The crane barge KELLY and towing vessel JOKER will be on scene and assisting with the work.
- There are three sections of pipeline located in the area. All three sections of pipeline will be removed.
- **Work on section #1 has been completed pending survey results.**
- **Work on sections #2 and #3 is currently being conducted.**
  - Working vessels are operating within the anchorage and are out of the main navigational channel at Marcus Hook Range.
  - Vessels transiting the area should utilize the main navigation channel while maintaining awareness of current transit restrictions and requirements in the area.
- Mariners are requested to maintain the minimum safe speed to maintain steerage and maintain strict adherence to the rules of the road.

The safety zone is established in all navigable waters within 250 yards of the crane barge KELLY, towing vessel JOKER, and associated diving and pipeline removal equipment.

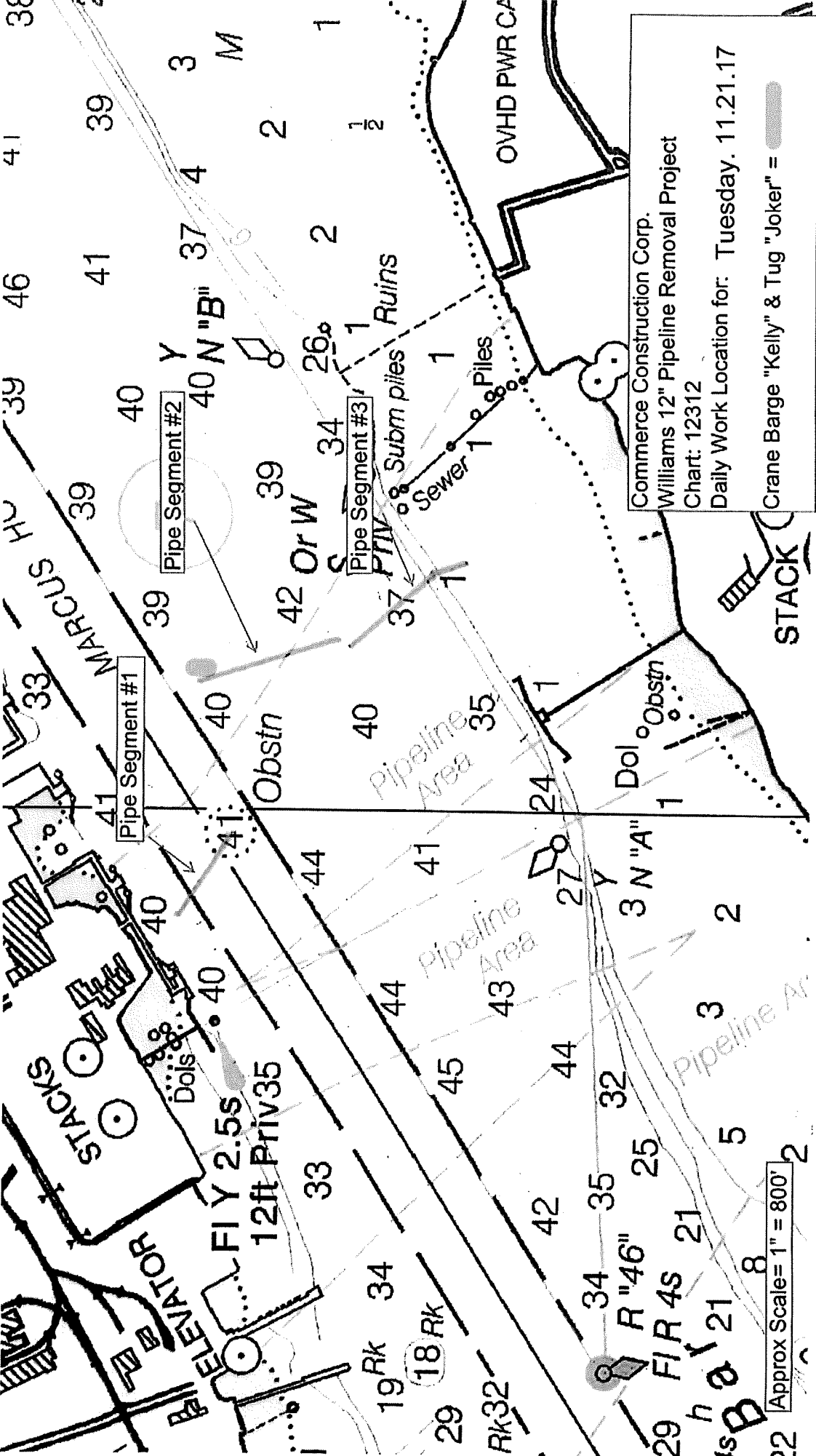
Vessels requesting to transit the safety zone shall contact the towing vessel JOKER on VHF-FM channel 13 or 80, at least 1 hour, as well as 30 minutes, prior to arrival to arrange safe passage. Vessels may also contact the COTP for permission to enter or transit the safety zone on VHF-FM channel 16.

If you have any questions regarding the content of this bulletin, please contact the Waterways Management Staff at (215) 271-4889/4814 or the Command Center at (215) 271-4807.



S. E. Anderson

Captain, U.S. Coast Guard  
Captain of the Port, Delaware Bay



Pipe Segment #1

Pipe Segment #2

Pipe Segment #3

Approx Scale= 1" = 800'

Commerce Construction Corp.  
 Williams 12" Pipeline Removal Project  
 Chart: 12312  
 Daily Work Location for: Tuesday, 11.21.17  
 Crane Barge "Kelly" & Tug "Joker" =