

# Marine Safety Information Bulletin

Commander  
U.S. Coast Guard  
Sector Delaware Bay  
1 Washington Ave  
Philadelphia, PA 19147

MSIB Number: 45-17  
Date: December 18, 2017  
Contact: Waterways Management Staff  
Phone: (215) 271-4814  
E-Mail: [SecDelBayWWM@uscg.mil](mailto:SecDelBayWWM@uscg.mil)

## OBJECT IN MARCUS HOOK ANCHORAGE

The Captain of the Port, Delaware Bay, is notifying mariners of an object located in the Marcus Hook anchorage, near the main navigational channel at Marcus Hook Range, on the Delaware River.

**\*\*Please see page 2 for chartlet\*\***

- The object is located at approximately 39° 48.261097' North Latitude, -75° 24.911007' West Longitude.
- The object is approximately 30' outside the red toe of the channel.
- Approximate dimensions of the object are 30'x3'.
- The minimum depth has been reduced to approximately 35.5' at mean low low water.

Mariners are advised to use extreme caution when transiting this portion of Marcus Hook Anchorage as reduced depths could be hazardous to navigation.

**Vessels drafting over 34 feet should avoid this area and transit around the object.**

This bulletin will be updated as information regarding survey and salvage operations becomes available.

If you have any questions regarding the content of this bulletin, please contact the Waterways Management staff at (215) 271-4814/4889 or the Command Center at (215) 271-4807.

S. E. Anderson  
Captain, U.S. Coast Guard  
Captain of the Port, Delaware Bay

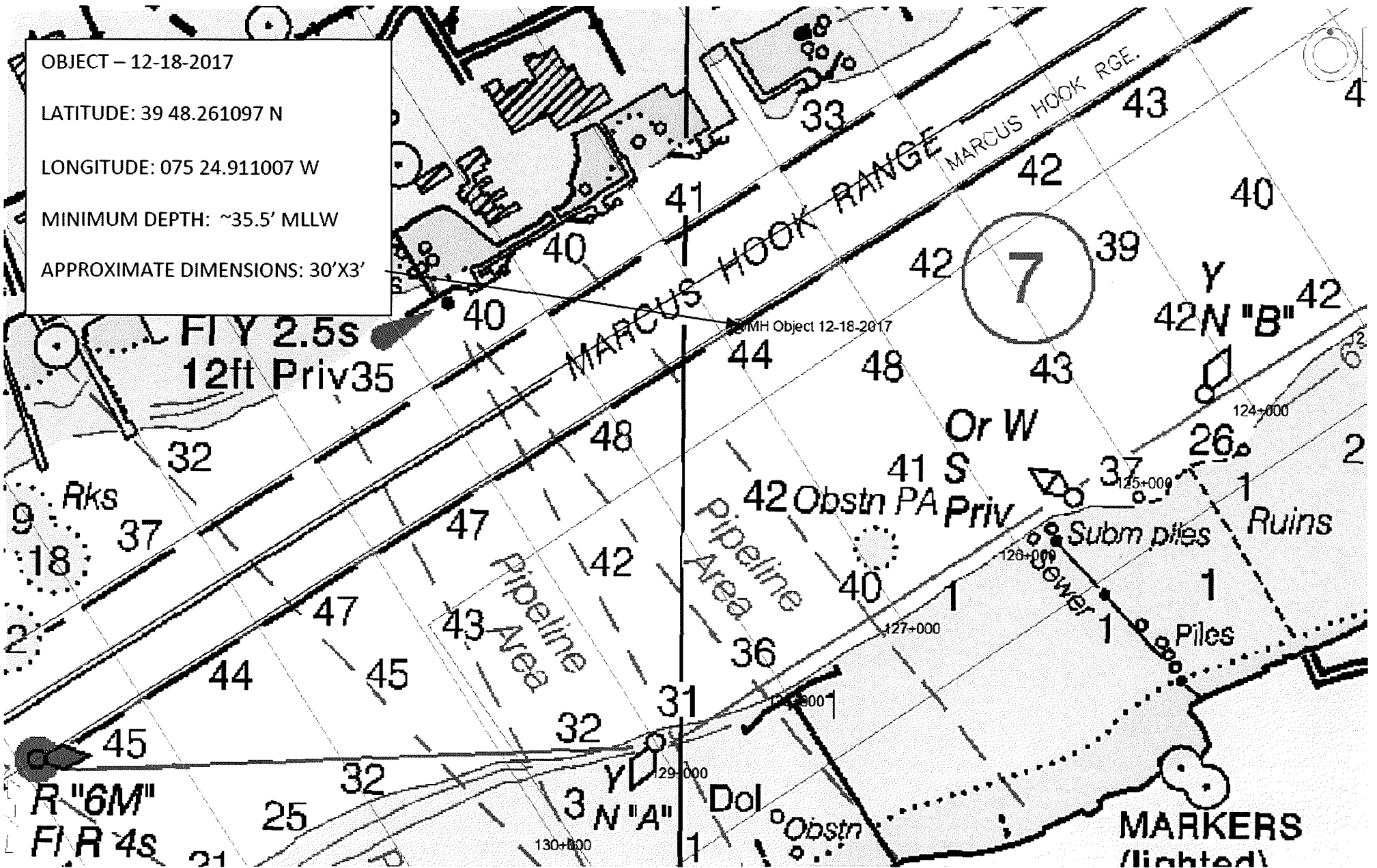
OBJECT - 12-18-2017

LATITUDE: 39 48.261097 N

LONGITUDE: 075 24.911007 W

MINIMUM DEPTH: ~35.5' MLLW

APPROXIMATE DIMENSIONS: 30'X3'



*This release has been issued for public information and notification purposes only.*