

SECTOR COMMANDER  
U.S. COAST GUARD  
SECTOR DELAWARE BAY  
1 WASHINGTON AVE  
PHILADELPHIA, PA 19147  
TEL: (215) 271-4800  
FAX: (215) 271-4899

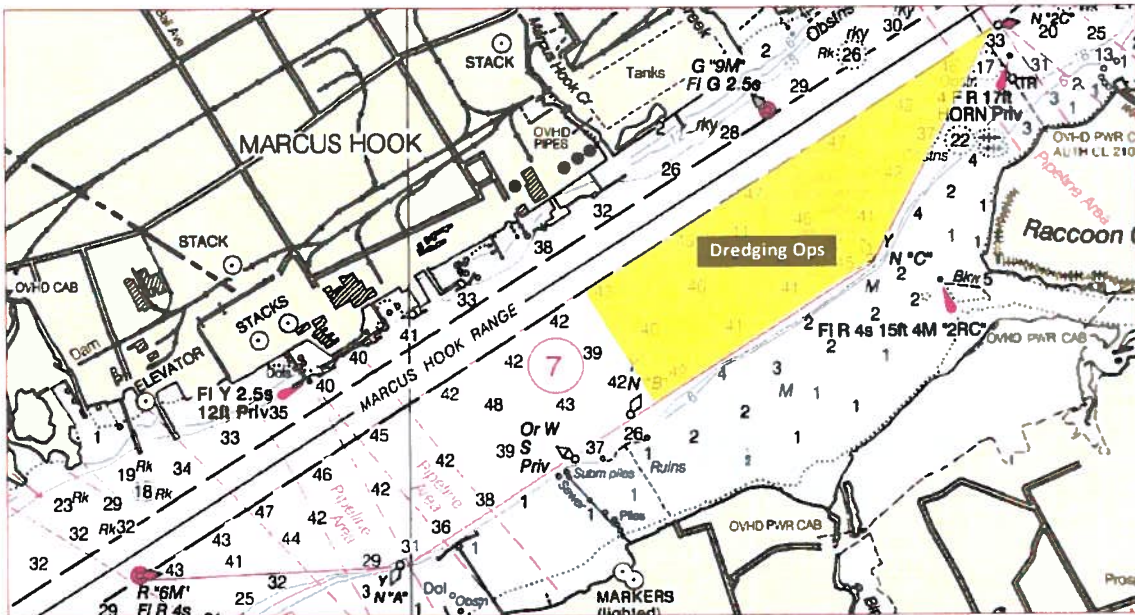
## MARINE SAFETY INFORMATION BULLETIN

[MSIB # 10-16]


April 12, 2015

### MARCUS HOOK ANCHORAGE DREDGING OPERATIONS

The U.S. Army Corps of Engineers will be conducting necessary dredging operations in Marcus Hook Anchorage, in the Delaware River, beginning April 18, 2016 at 0600 until April 23, 2016 at 0600. During this time, the dredge MCFARLAND will be operating within the northern half of Marcus Hook Anchorage where potentially hazardous shoaling of 34 feet has been reported at MLLW. Vessels intending to anchor in Marcus Hook Anchorage should only anchor in the southern half of the anchorage and are requested to stay clear of the dredge MCFARLAND and all related dredging equipment. The dredge MCFARLAND can be contacted via VHF-FM channels 13 and 16. Vessels are encouraged to use Mantua Creek anchorage (anchorage #9) and Deepwater Point anchorage (anchorage #6) as alternatives.



Questions regarding the contents of this bulletin or expectations of the Captain of the Port can be directed to (215) 271-4807 or (267) 515-7294.

  
B. A. COOPER  
Captain, U.S. Coast Guard  
Captain of the Port, Delaware Bay