

**SECTOR COMMANDER  
U.S. COAST GUARD  
SECTOR DELAWARE BAY  
1 WASHINGTON AVE.  
PHILADELPHIA, PA 19147  
TEL: (215) 271-4940  
FAX: (215) 271-4833**

**MARINE SAFETY INFORMATION BULLETIN**

[MSIB #37-14]

October 7, 2014

**Delaware Bay and Atlantic Ocean – Navy Exercise**

Mariners are advised that due to an upcoming Navy exercise the Navy will begin staging equipment on October 7, 2014 in the below areas. Naval vessels will be operating in the three areas to stage equipment that will be used in the exercise.

The first will encompass all waters of the Delaware Bay bounded by a line connecting the following points; latitude 38°54'10"N, longitude 075°03'12"W thence north to latitude 39°02'24"N, longitude 075°02'38"W thence east to latitude 39°02'24"N, longitude 075°01'42"W thence southeast to latitude 38°54'22"N, longitude 075°02'18"W thence west to point of origin.

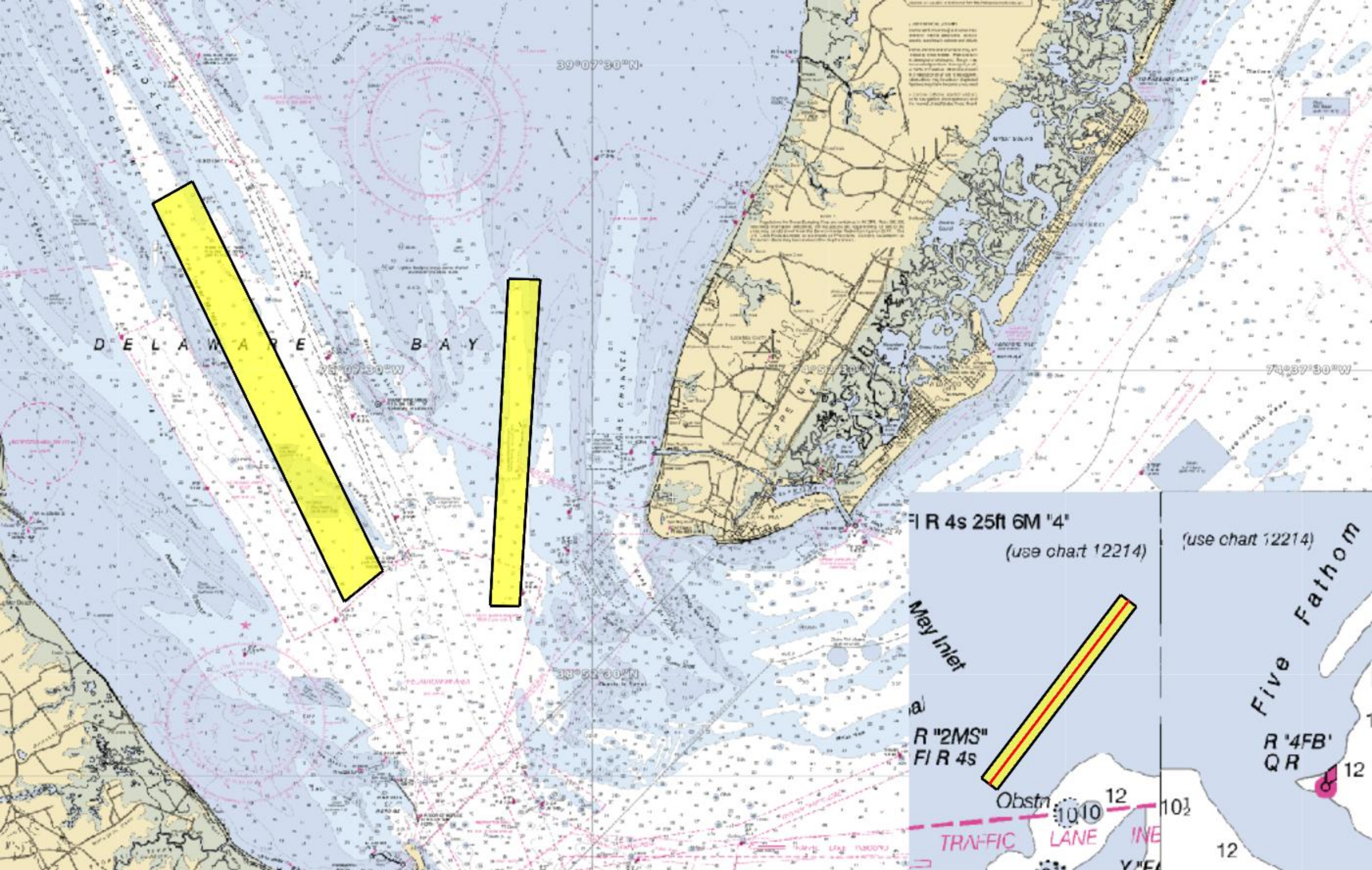
The second will encompass all waters of the Delaware Bay bounded by a line connecting the following points; latitude 38°54'17"N, longitude 075°07'50"W thence northwest to latitude 39°04'06"N, longitude 075°13'54"W thence northeast to latitude 39°04'39"N, longitude 075°12'39"W thence southeast to latitude 38°55'04"N, longitude 075°06'38"W thence southwest to point of origin.

The third will encompass a portion of the North Atlantic Ocean bounded by a line connecting the following points; latitude 38°49'57"N, longitude 074°47'41"W thence northeast to latitude 38°54'28"N, longitude 074°43'15"W thence southeast to latitude 38°54'11"N, longitude 074°42'45"W thence southwest to latitude 38°49'39"N, longitude 074°47'10"W thence northwest to point of origin, off the coast of Cape May, NJ.

Mariners are advised to not enter into, transit, or anchor within these areas. If you have any questions regarding the contents of this bulletin or the expectations of the COTP, please contact the Waterways Management staff at (215) 271-4814 or the Situation Unit Controller at (215) 271-4807.



**B.A. COOPER**  
Captain, U.S. Coast Guard  
Alternate Captain of the Port, Delaware Bay



39°07'30"N

DELAWARE BAY

75°07'30"W

75°07'30"W

74°57'30"W

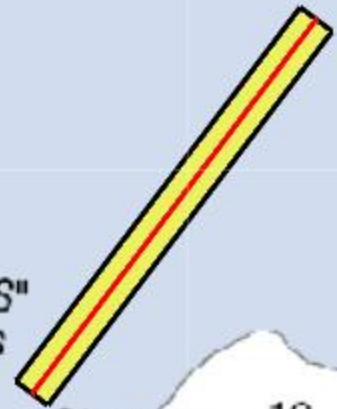
39°02'30"N

FI R 4s 25ft 6M "4"  
(use chart 12214)

(use chart 12214)

Mey Inlet

R "2MS"  
FI R 4s



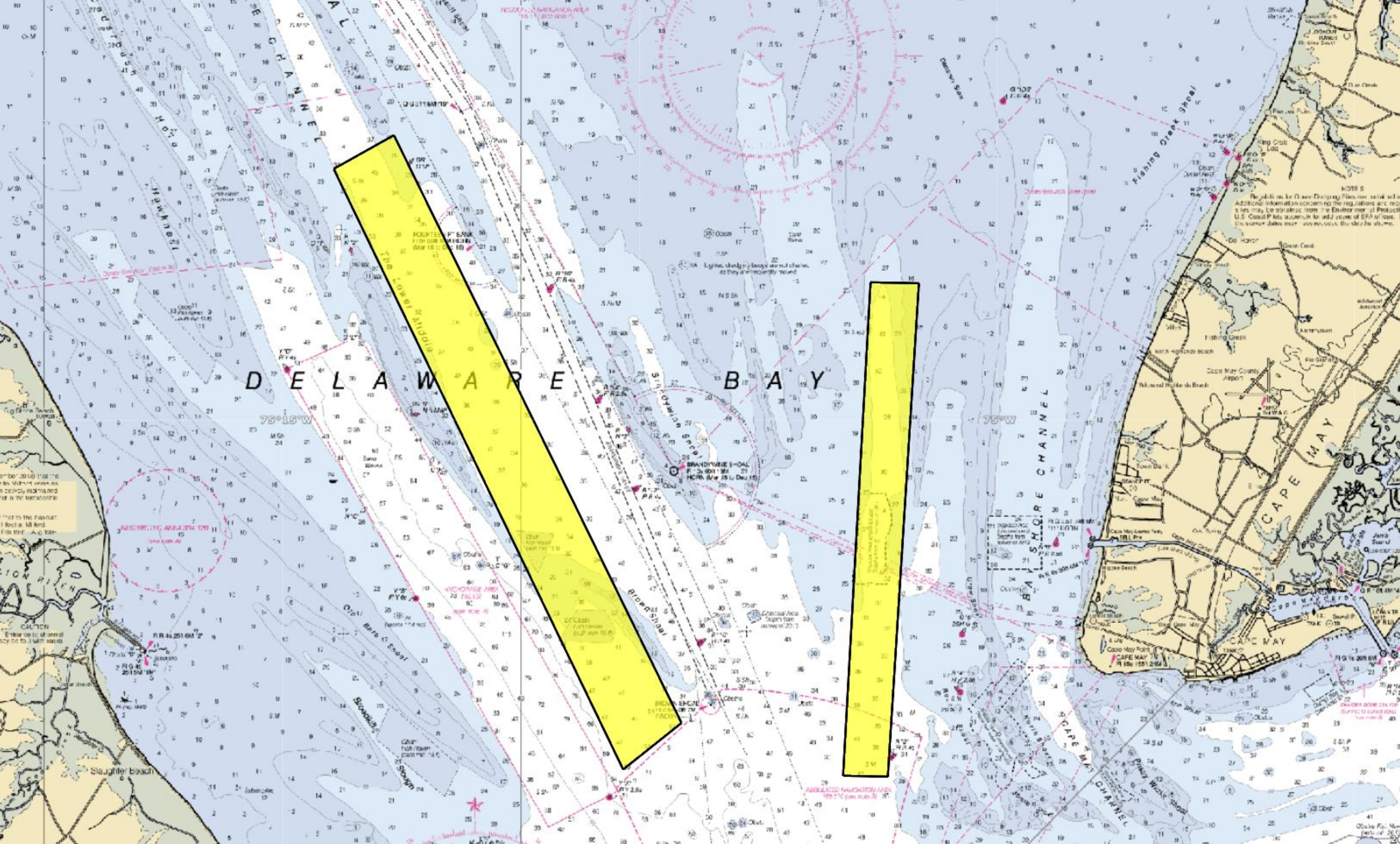
Obstr 100 12

TRAFFIC LANE

Five Fathom

R "4FB"  
QR 12

12



DELAWARE BAY

75°15'W

75°W

CAPE MAY CHANNEL

CAPE MAY

NOTE:  
This chart is based on the latest available data and is subject to change without notice. Additional information concerning regulations and notices may be obtained from the Environmental Protection Agency, U.S. Coast and Geodetic Survey, or the U.S. Coast Guard. The user should refer to the appropriate authorities for the latest information.

Lights, daymarks and buoys are not shown, as they are frequently moved.

RESTRICTED AREA 100  
100 Yards  
100 Yards

ANCHORAGE AREA  
20 FATHOMS  
20 FATHOMS

REGULATED NAVIGATION AREA  
100 YARDS  
100 YARDS

Obtain the latest edition of this chart from the U.S. Coast and Geodetic Survey, Washington, D.C.

