

**SECTOR COMMANDER
U.S. COAST GUARD
SECTOR DELAWARE BAY
1 WASHINGTON AVE.
PHILADELPHIA, PA 19147
TEL: (215) 271-4940
FAX: (215) 271-4833**

MARINE SAFETY INFORMATION BULLETIN

[MSIB #35-14]

September 19, 2014

Delaware Bay and Atlantic Ocean Safety Zones – Navy Exercise

To mitigate the risks associated with the Navy exercise, the Captain of the Port, Sector Delaware Bay will enforce temporary safety zones in Delaware Bay and the North Atlantic Ocean near Cape May, New Jersey. All of the safety zones will be effective and enforced from October 16, 2014 to October 24, 2014 from 6:00AM to 8:00PM each day. The safety zones will encompass two areas within Delaware Bay and one area in the North Atlantic Ocean.

The first safety zone will encompass all waters of the Delaware Bay, bounded by a line connecting the following points; latitude 38°54'10"N, longitude 075°03'12"W thence north to latitude 39°02'24"N, longitude 075°02'38"W thence east to latitude 39°02'24"N, longitude 075°01'42"W thence southeast to latitude 38°54'22"N, longitude 075°01'18"W thence west to point of origin.

The second safety zone will encompass all waters of the Delaware Bay bounded by a line connecting the following points; latitude 38°54'17"N, longitude 075°07'50"W thence northwest to latitude 39°04'06"N, longitude 075°13'54"W thence northeast to latitude 39°04'39"N, longitude 074°12'39"W thence southeast to latitude 38°55'04"N, longitude 075°06'38"W thence southwest to point of origin.

The third safety zone will encompass a portion of the North Atlantic Ocean bounded by a line connecting the following points; latitude 38°49'57"N, longitude 074°47'41"W thence northeast to latitude 38°54'28"N, longitude 074°43'15"W thence southeast to latitude 38°54'11"N, longitude 074°42'45"W thence southwest to latitude 38°49'39"N, longitude 074°47'10"W thence northwest to point of origin, off the coast of Cape May, NJ.

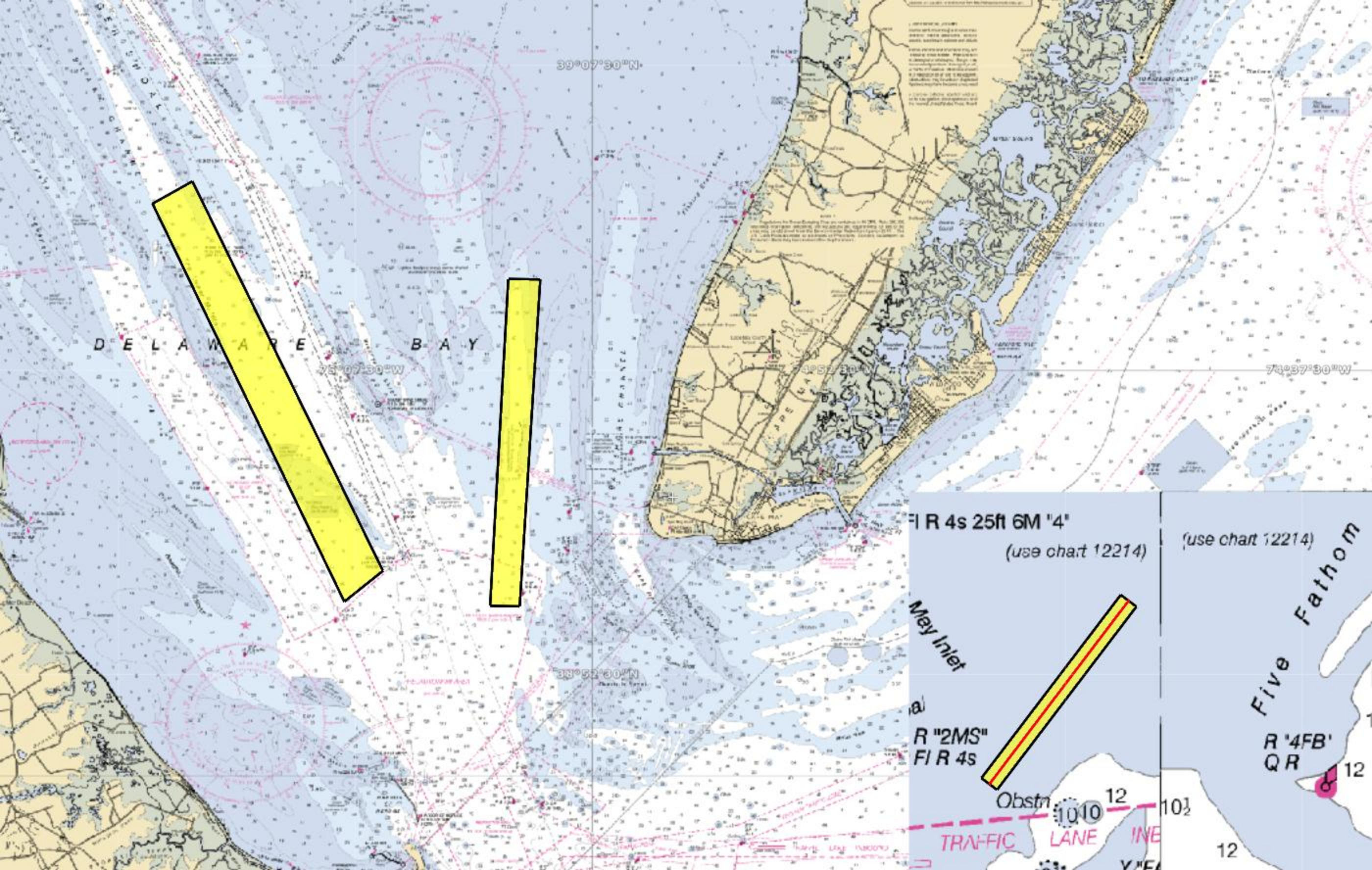
Entry into, transiting, or anchoring within the safety zones is prohibited. Once operations are concluded, an informational broadcast will inform mariners that the safety zone is no longer being enforced.

If you have any questions regarding the contents of this bulletin or the expectations of the COTP, please contact the Waterways Management staff at (215) 271-4814 or the Situation Unit Controller at (215) 271-4807.



K. MOORE

Captain, U.S. Coast Guard
Captain of the Port, Delaware Bay



DELAWARE BAY

39°07'30"N

75°07'30"W

75°07'30"W

75°07'30"W

39°07'30"N

FI R 4s 25ft 6M "4"
(use chart 12214)

(use chart 12214)

Mey Inlet

R "2MS"
FI R 4s



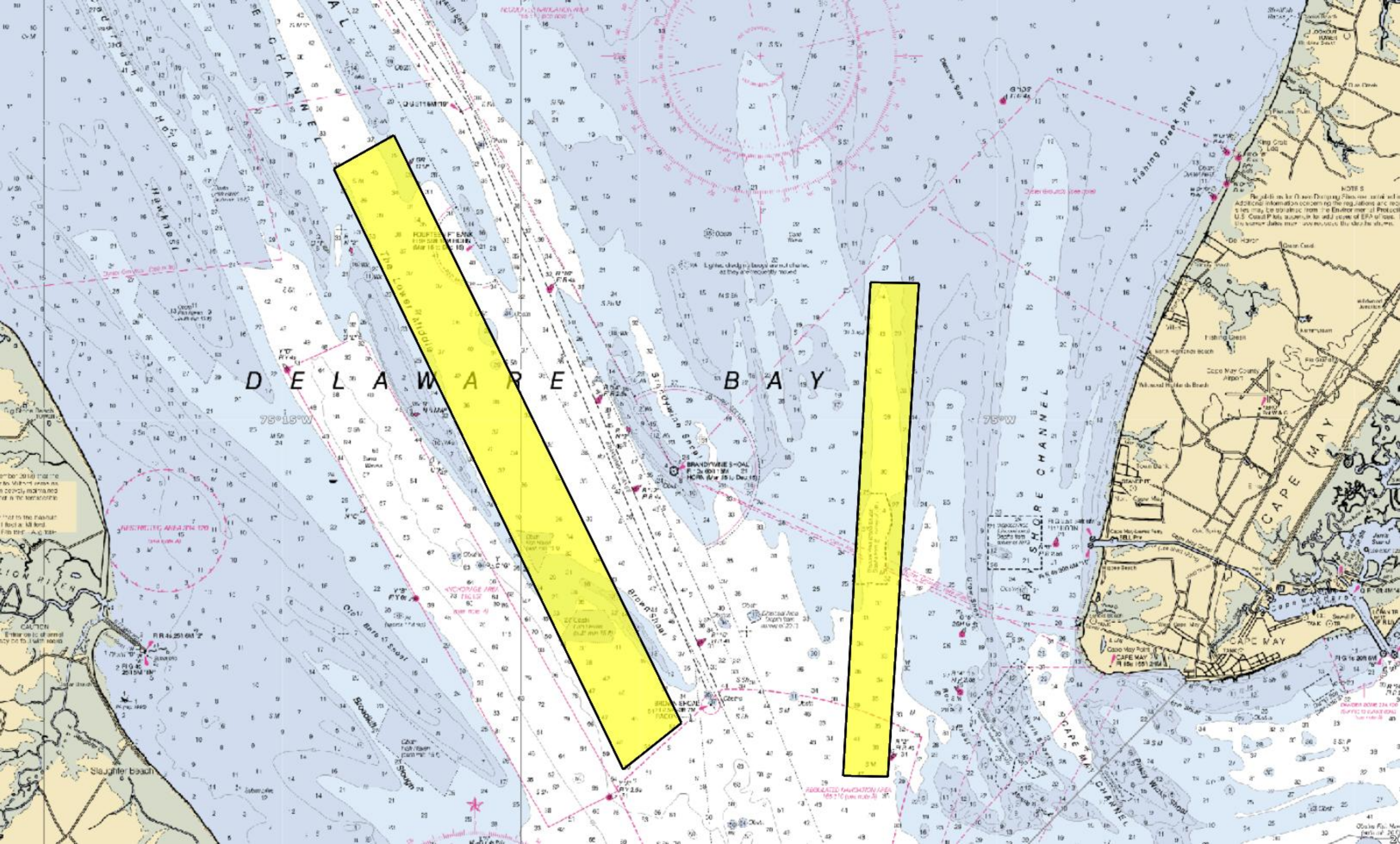
Obstrn 1010

TRAFFIC LANE

Five Fathom

R "4FB"
QR 12

12



DELAWARE BAY

75°15'W

75°W

RESTRICTED AREA 100
100 (see rule 10)

REGULATED NAVIGATION AREA
100 (see rule 10)

NOTE:
Regulations for Ocean Dumping Classifications and Additional Information concerning the regulations and notes may be obtained from the Environmental Protection Agency, U.S. Coast Pilot, Appendix A and C of EPA of 1973. The same date may be revised by the chart shown.

October 2010 that the
No. 10000 series as
in coastal waters and
in the territorial

not to the national
1 foot as. All kind
for the A-C 100-

CAUTION
Enter on to of small
only on to 1 with sound

Slaughter beach

Obtain the
part of 200

