



**Great Lakes
Dredge & Dock
Company**

2122 York Road
Oak Brook, Illinois 60523
630 574 3000

Great Lakes Dredge & Dock Company, LLC
2122 York Road
Oak Brook, Il 60523

September 3, 2012

United States Coast Guard
Sector Delaware Bay
One Washington Avenue
Philadelphia, PA 19147

Attn: Waterway Management

RE: **Commence Dredging Operations Delaware River Main Channel Deepening: PA, NJ & DE**

1) Notice to Mariners

2) Intent to Commence Dredging Operations in Delaware River Main Channel

To Whom It May Concern:

Great Lakes Dredge & Dock Company will commence dredging operations for the Delaware River Main Channel Deepening Project on September 10th 2012. Our intent is to continue using Horseshoe Shoal as an equipment staging area to anchor pipe and equipment during dredging operations. Equipment including Derricks, Anchor Barges, and Tugs will be utilized for dredge support and transport to/from the dredge area. Dredging operations will commence in the Eagle Point Range, dredging downriver. We request that a Local Notice to Mariners be issued with the following information:

Designation: Dredging (Philadelphia Harbor to Tinicum)
Equipment Staging Area (Horseshoe Shoal)
Delaware River Main Channel Deepening PA, NJ & DE Project
Philadelphia District
U.S. Army Corps of Engineers
USACE Contract No.: W912BU-12-C-0034

Contractor: Great Lakes Dredge & Dock Company, LLC
2122 York Road
Oak Brook, Il 60523
Ph. (630)-574-3000

Duration: Commence: 10 September 2012
Complete: 3 Months

Equipment: *Dredge Illinois: 30" 8400 HP-Diesel*
Anchor Barge (GL 106): 60' by 40' by 6'
Supply Barge
Derrick (Mobro 1220): 50 TON
Tug Brangus
Tug R.L. Enterkin
Muskegon River (Crew Boat)
Pearl River (Survey Boat)

Communications: Marine VHF channels 13 and 16

Operations: Dredging operations will occur 7 days per week and 24 hours per day. Please advise all traffic to observe "slow bell" when approaching equipment staging areas and dredge locations to minimize wake in the work area. Open radio communication with the vessels in the work area is critical to maintaining safe working conditions. Dredging will consist of staging equipment and supplies at Horseshoe Shoal and pumping dredged material through submerged pipeline to the National Park Disposal Area. During dredging operations, equipment and vessels will be within the Delaware River Main Channel and will make every effort to communicate with and respond to vessel traffic to maintain a navigable channel.

Delaware River Dredging Lat/Long:

Equipment Staging Area: Horsehoeshoal	
<i>Latitude (N)</i>	<i>Longitude (W)</i>
39° 53' 09.91"	075° 09' 9.09"
Dredging: Delaware River Upper Limit	
<i>Latitude (N)</i>	<i>Longitude (W)</i>
39° 54' 25.98"	075° 07' 52.19"
Dredging: Delaware River Lower Limit	
<i>Latitude (N)</i>	<i>Longitude (W)</i>
39° 50' 53.73"	075° 16' 31.50"

Figure 1: Project Overview Delaware River Deepening Project (West Portion).

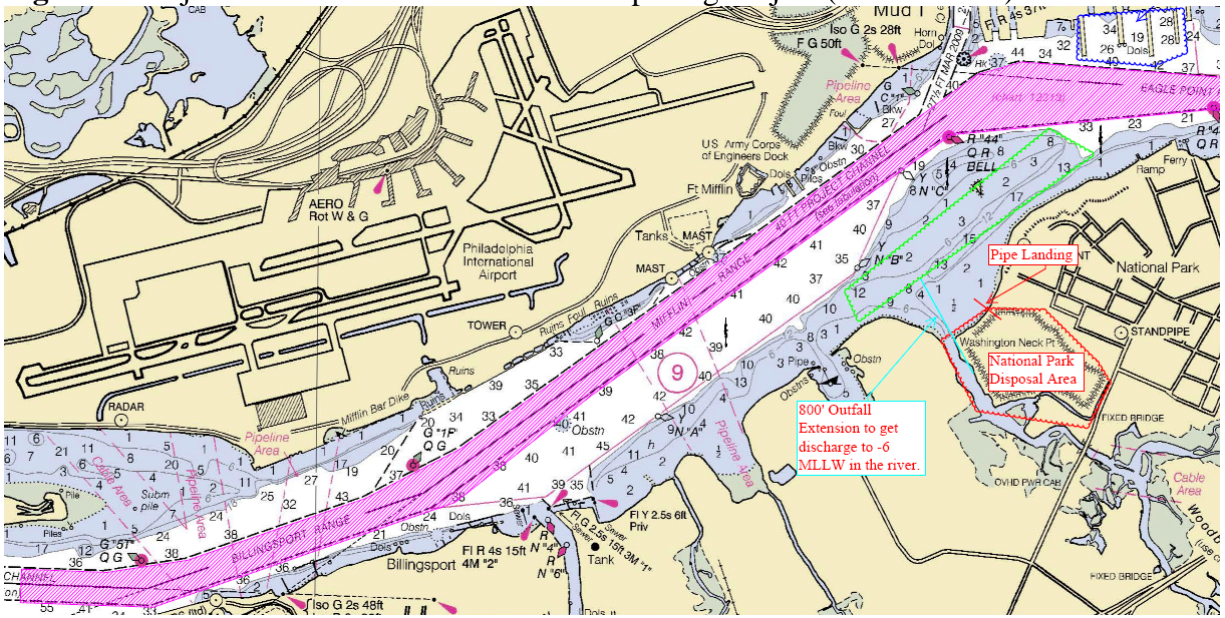


Figure 2: Project Overview Delaware River Deepening Project (East Portion).

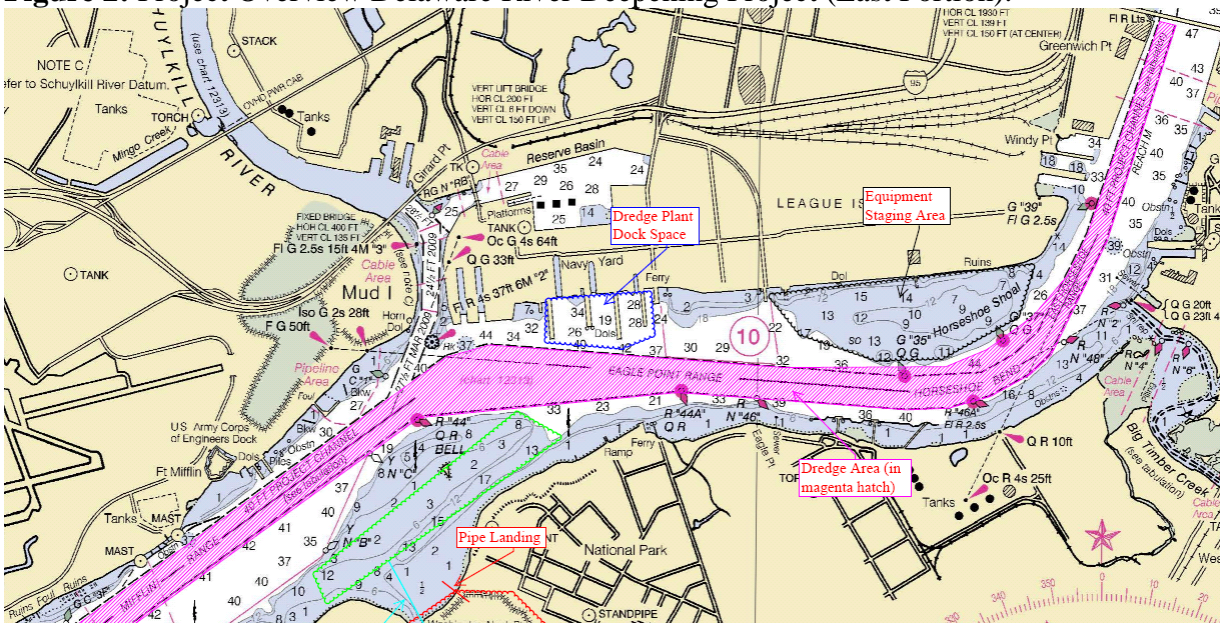


Figure 3: Horseshoe Shoal (Equipment Staging Area)

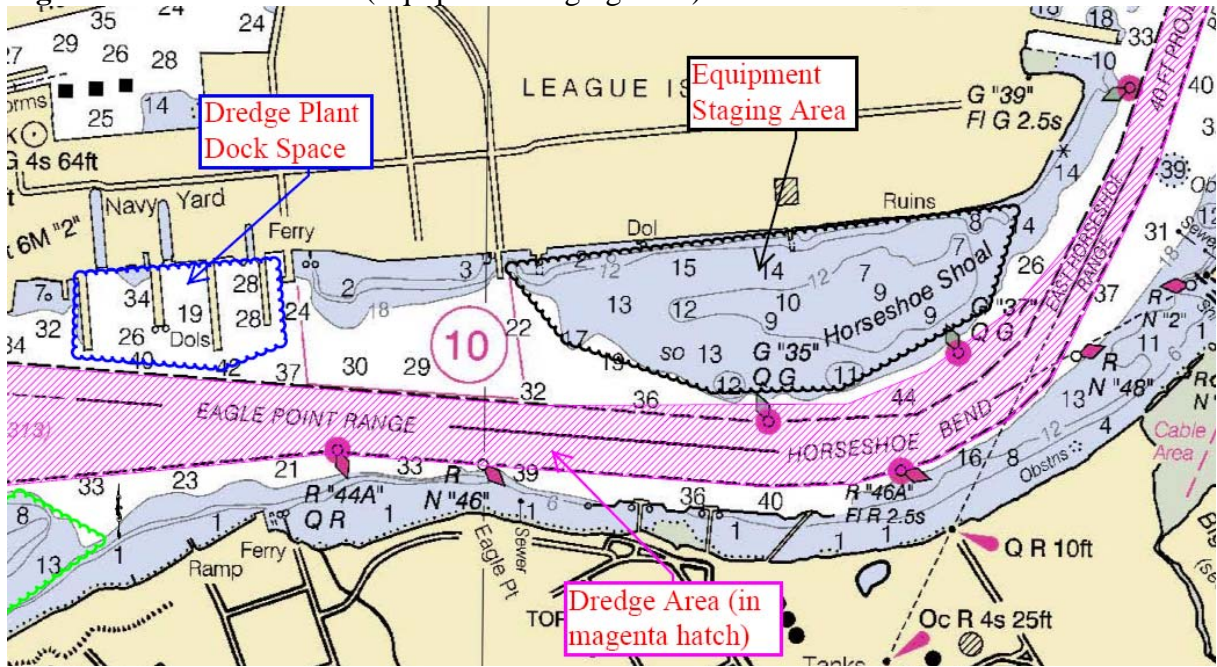
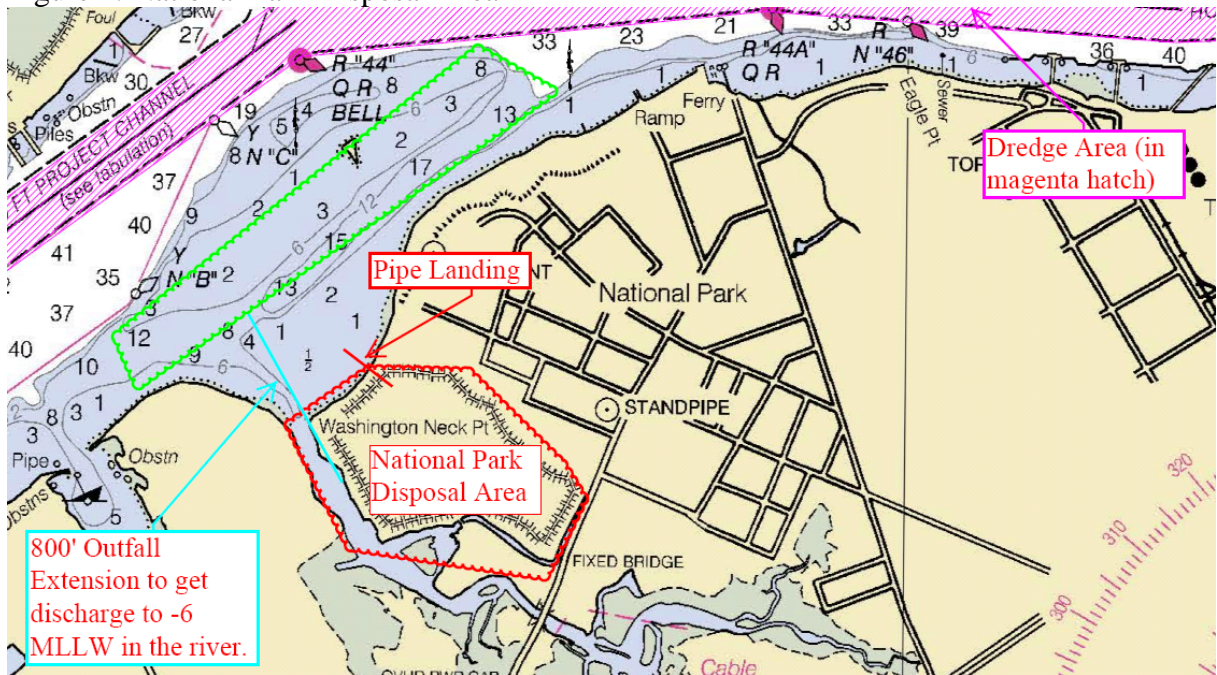


Figure 4: National Park Disposal Area



800' Outfall
Extension to get
discharge to -6
MLLW in the river.

Should you have any questions concerning this project, please feel free to contact Dave Allen at 305-793-8619 or via email at DAllen@gldd.com. Thank you for your cooperation in this matter.

Sincerely,
Great Lakes Dredge & Dock Company

A handwritten signature in black ink, appearing to read "David Selle".

David Selle
Quality Control Manager

Cc: Jerald Jones, USACE
Ryan Moore, USACE
Dave Allen, GLDD Contract Manager
Mike Greenwood, GLDD Site Manager