

# Mid-Atlantic Survey Activity

## Mariners Briefing

Date of notice: June 7th, 2021

Notice no. 085

### Overview

These briefings are intended to update mariners on marine operations for the Mid-Atlantic survey activities. Survey operations are planned for locations throughout the lease area (see chart) and are expected to last several months. These operations involve only the survey phase of the projects.

Mariners briefings are submitted as needed to the U.S. Coast Guard and distributed to the fishing community and interested mariners on our website at: [us.orsted.com/mariners](https://us.orsted.com/mariners) or via email upon request through Kara Gross (KARGR@orsted.com).

**Vessels will make a daily securite calls on VHF CH 16 at 0600 and 1800**

### About the wind farms

**Ocean Wind (OCW)**, with the support of PSEG, is a planned offshore wind farm located 15 miles off the New Jersey coast able to deliver clean energy to the New Jersey electrical grid.

Ongoing OCW survey activities

- Projected End: June 2021

**Skipjack Wind (SJW)** is a planned offshore wind farm located 19 miles off the Delmarva Coast able to deliver clean energy to the Maryland electrical grid.

Ongoing SJW survey activities

- Projected End: October 2021\*

\* Skipjack Wind survey operations were initially scheduled to conclude by the end of July 2021 but have been delayed due to unforeseeable circumstances and operations will continue through October 2021

### Contact

**For fisheries related inquiries:**

**Kara Gross**  
**Mid-Atlantic Fisheries Liaison**  
Phone: 857.330.7699  
Email: KARGR@orsted.com

**Ross Pearsall**  
**Fisheries Stakeholders Relations Manager**  
Phone: 857.278.2442  
Email: ROSPE@orsted.com

**Rodney Avila**  
**Corporate Fisheries Liaison**  
Phone: 857.332.4479  
Email: RODAV@orsted.com



## Ocean Researcher

MV Ocean Researcher is used for geophysical surveying

Flag: UK

LOA: 226 ft

Beam: 46 ft

Call Sign: GDLS

IMO: 8207941

**Project:** Skipjack Wind



## Ocean Endeavour

MV Ocean Endeavour is used for geophysical surveying

Flag: UK

LOA: 253 ft

Beam: 48 ft

Call Sign: GAAL

IMO: 8402008

**Project:** Skipjack Wind



## Ocean Observer

MV Ocean Observer is used for geophysical surveying

Flag: UK

LOA: 262 ft

Beam: 50 ft

Call Sign: GHXX

IMO: 8511275

**Project:** Ocean Wind



## Leeway Striker

MV Striker is used for geophysical surveying

Flag: CA

LOA: 72 ft

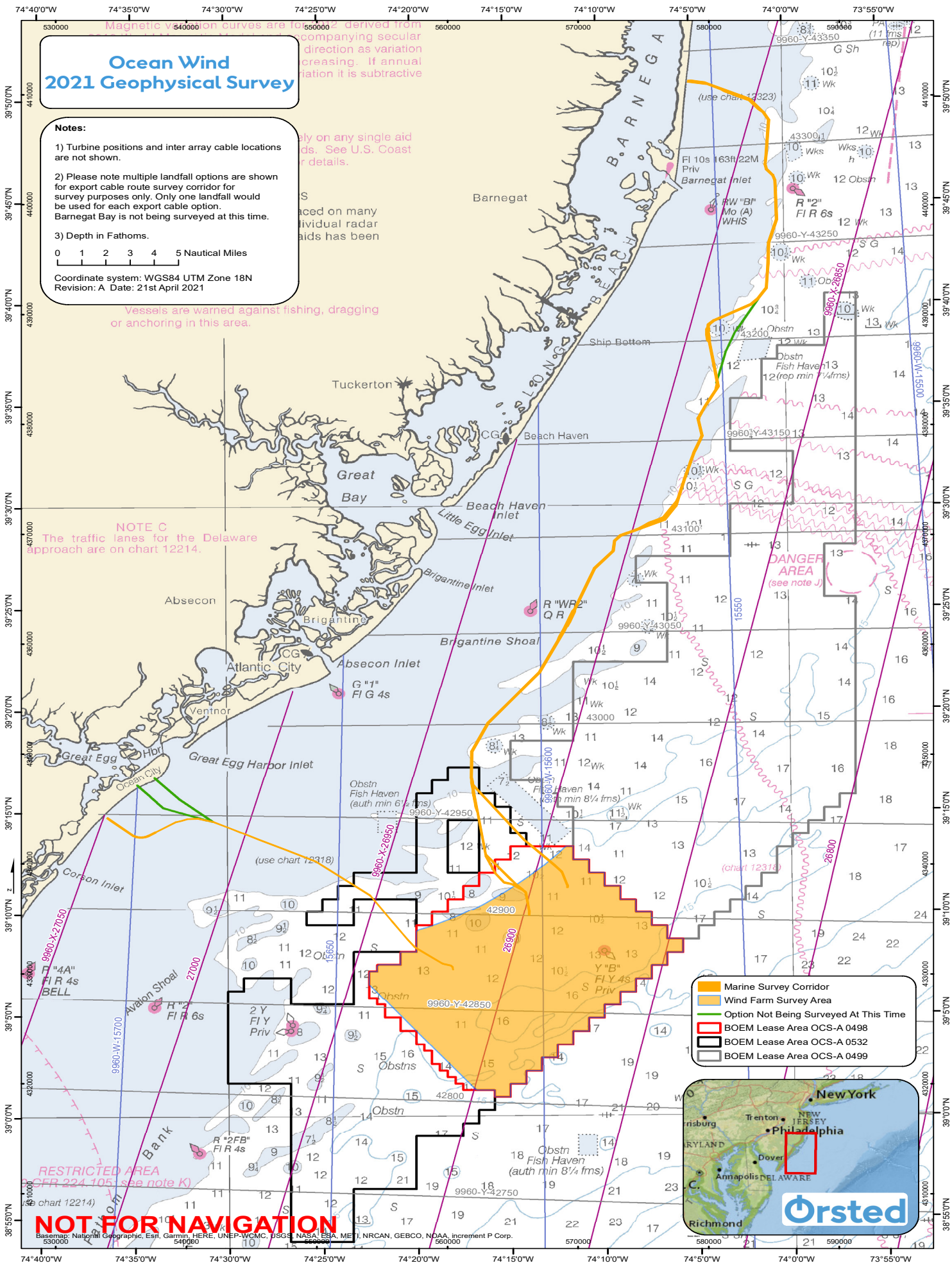
Beam: 16.5 ft

**Project:** Ocean Wind


Vessel name	Site function	Project	Activity	Projected outlook
Ocean Researcher	Geophysical survey vessel	Skipjack Wind	Vessel conducting survey operations within lease area / wx dependent	Vessel will continue to conduct survey operations inside the lease area / wx dependent
Ocean Endeavour	Geophysical survey vessel	Skipjack Wind	Vessel conducting calibrations inside and outside the lease area / wx dependent	Vessel expected to begin survey operations within the lease area later this week / wx dependent
Ocean Observer	Geophysical survey vessel	Ocean Wind	Vessel conducting survey operations within the lease area	Vessel will continue to conduct survey operations within the lease area / wx dependent
Leeway Striker	Geophysical survey vessel	Ocean Wind	Vessel conducting survey operations along project cable route	Vessel will continue to conduct survey operations along project cable route

**\*\*All Mariners transiting or fishing in the survey area are requested to give a wide berth to survey vessels as they may be limited in their ability to maneuver (VRAM) and towing gear out to 300 meters behind the vessel. Vessels in the vicinity of the survey vessels should operate in a manner that will not endanger the vessel or associated equipment\*\***





# Notice to Mariners 2021 Geophysical Survey

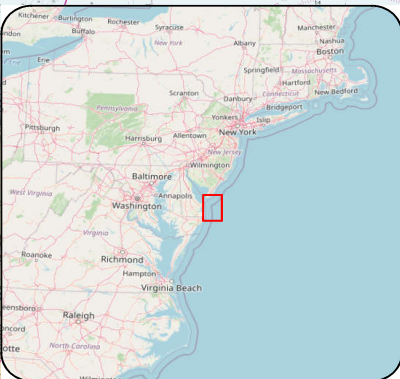
-  Skipjack Wind Survey Area
-  BOEM Lease Areas

## Notes:

- 1) Turbine positions and inter array cable locations are not shown.
- 2) Depth in Fathoms.

0 0.5 1 1.5 2 Nautical Miles

Coordinate system: WGS84 UTM Zone 18N



# Orsted

## PUBLIC

Service Layer Credits: © OpenStreetMap (and) contributors, CC-BY-SA  
NOAA Office of Coast Survey

# NOT FOR NAVIGATION