



# Marine Safety Information Bulletin

Commander  
U.S. Coast Guard  
Sector Delaware Bay  
1 Washington Ave  
Philadelphia, PA 19147

MSIB Number: 34-18  
Date: October 9, 2018  
Contact: Waterways Management Staff  
Phone: (215) 271-4814  
E-Mail: [SecDelBayWWM@uscg.mil](mailto:SecDelBayWWM@uscg.mil)

## OBJECTS IN MANTUA CREEK ANCHORAGE (Update 1)

**\*\*UPDATED INFORMATION IN BOLD\*\***

The Captain of the Port, Delaware Bay, is notifying mariners of two objects reported within the boundaries of Mantua Creek Anchorage #9 on the Delaware River. **\*\*Please see page 2 for chartlet\*\***

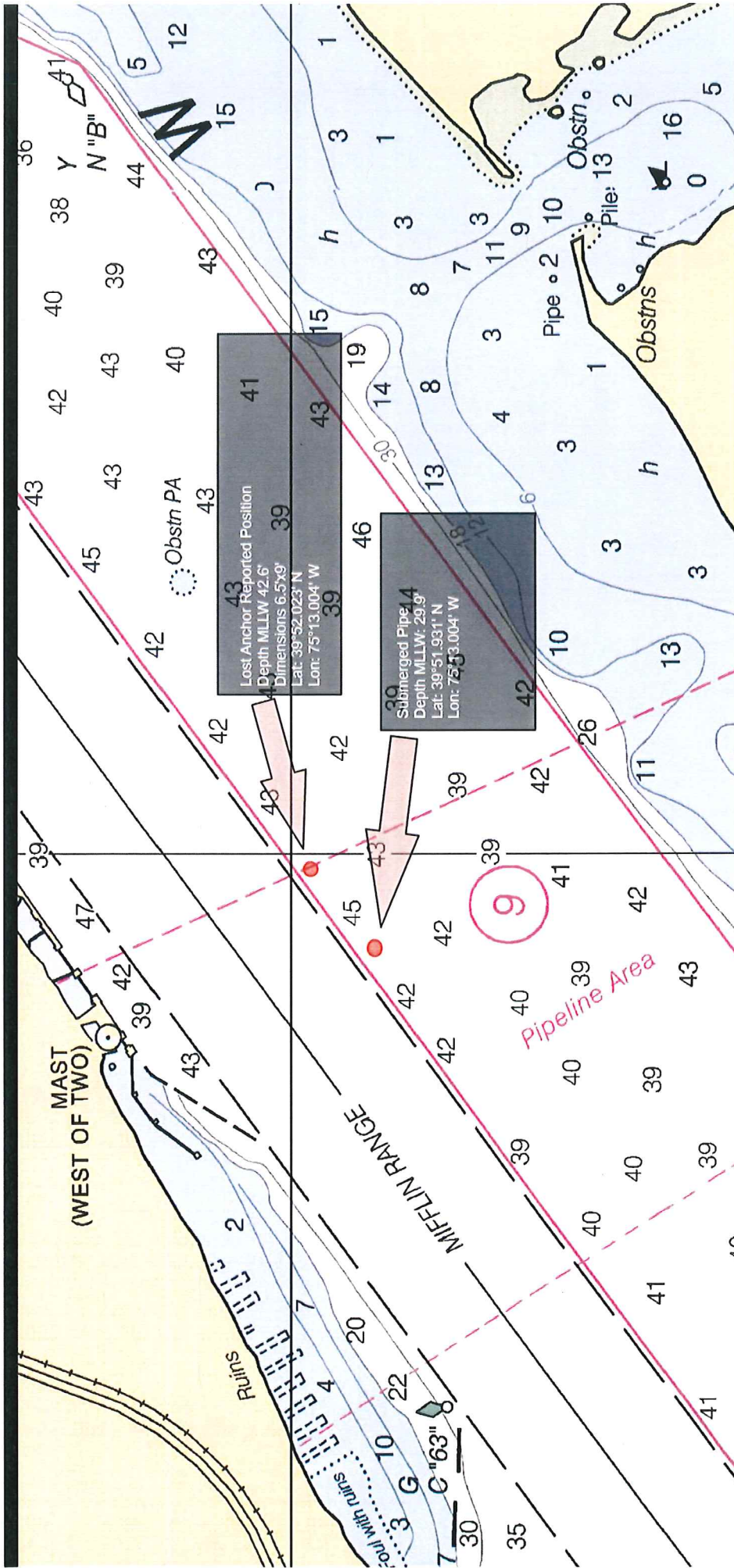
- Object 1 is a lost anchor reported lost at approximate position **39° 52.023' North Latitude, 75° 13.004' West Longitude.**
  - Suspected lost anchor dimensions 6.5 feet in width and 9 feet in height.
  
- Object 2 is located at approximately 39° 51.931' North Latitude, 75° 13.095' West Longitude.
  - **Marked with buoy "WR 62 Red"**
  - **WR 62 Synthetic AIS-ATON has been created with MMSI 993672632**
  - **Submerged pipe approximately 10"-16" in diameter.**
  - Located approximately 540 feet from channel centerline towards New Jersey shoreline in Mantua Creek Anchorage.
  - Reduced depth at mean low low water is 29.9 feet.

Mariners are advised to use extreme caution when transiting this portion of Mantua Creek Anchorage as some depths at mean low low water could be hazardous to navigation.

Vessels drafting over 30 feet should avoid this area and transit around the objects.

If you have any questions regarding the content of this bulletin, please contact the Waterways Management staff at (215) 271-4814/4889 or the Command Center at (215) 271-4807.

*S. E. Anderson*  
Captain, U.S. Coast Guard  
Captain of the Port, Delaware Bay



This release has been issued for public information and notification purposes only.